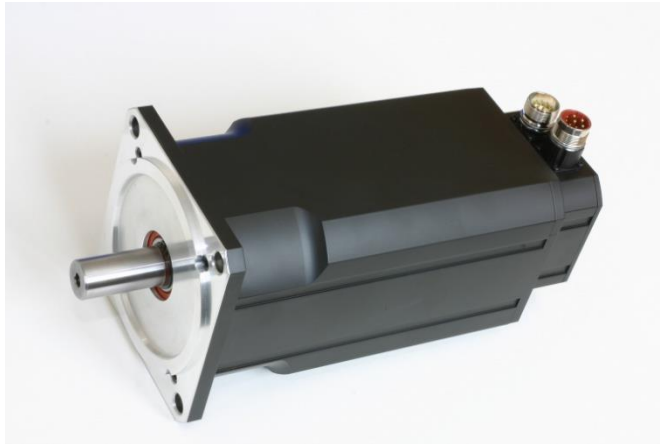
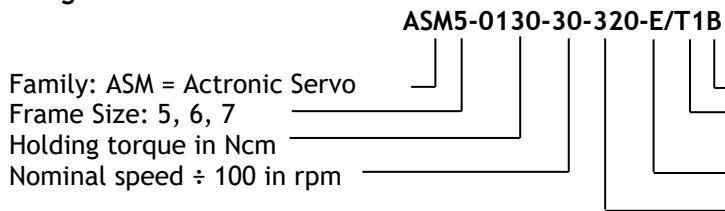


## ASM Family of brushless Servomotors (ASM5 to ASM8)



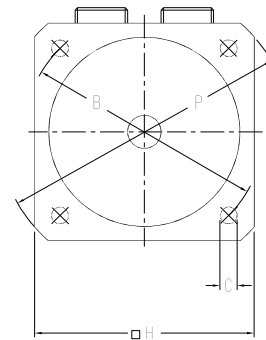
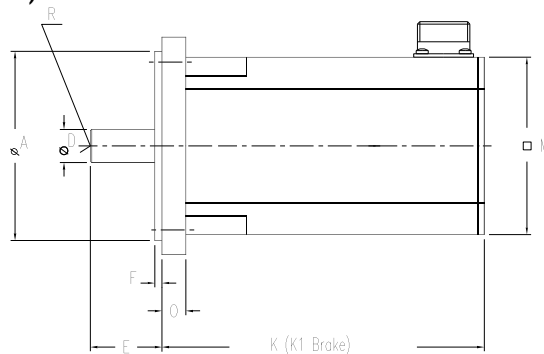
- No. of poles: 6
- Feedback: encoder (E) (2048 lines, TTL) with Hall-simulation  
optional: resolver (R), absolute encoder (A) t.b.d.
- Protection: IP64, optional IP65 w/o (V) or with (W) shaft seal
- Electrical connections: straight screw connectors (Intercontec), optional rotatable angular connectors
- Thermal motor protection: PTC, optional: thermal switch 145°C, PT1000 or NTC
- Shaft w/o key, optional key DIN 6885 (P)
- Options: cable (K), customized versions

### Designation:



Brake: B = Holding brake, 24Vdc  
 Thermal protection Tx: 0=switch, 1=PTC  
 2=NTC, 15=PT1000  
 Encoder with HE, R=Resolver A=Absolute  
 Nominal bus voltage in Vdc

### Dimensions (mm):



	A <sub>j6</sub>	B	C	D <sub>k6</sub>	E	F	H	K		K1	M	O	P	R
								Encoder	Resolver					
ASM5-0660	130	165	11	24	50	3.5	142	188	185	+43	127	11	188	M8x19
ASM5-1050	130	165	11	24	50	3.5	142	222	219	+43	127	11	188	M8x19
ASM5-1350	130	165	11	24	50	3.5	142	239	236	+43	127	11	188	M8x19
ASM5-1700	130	165	11	24	50	3.5	142	273	270	+43	127	11	188	M8x19
ASM5-2200	130	165	11	24	50	3.5	142	307	304	+43	127	11	188	M8x19
ASM6-1350	180	215	13	24	50	3.5	190	tbd	201	+53	158	12	250	M8x19
ASM6-1900	180	215	13	24	50	3.5	190	tbd	235	+53	158	12	250	M8x19
ASM6-2200	180	215	13	24	50	3.5	190	tbd	252	+53	158	12	250	M8x19
ASM6-2900	180	215	13	24	50	3.5	190	tbd	310	+46	158	12	250	M8x19
ASM6-3500	180	215	13	24	50	3.5	190	tbd	378	+46	158	12	250	M8x19
ASM7-2700	180	215	15	28	58	4	190	tbd	242	+54	190	15	250	M10x22
ASM7-3200	180	215	15	28	58	4	190	tbd	257	+54	190	15	250	M10x22
ASM7-4000	180	215	15	28	58	4	190	tbd	287	+54	190	15	250	M10x22
ASM8-4000	230	265	14.5	38	80	4	240	tbd	310	+68	225	18	300	M12x30
ASM8-6800	230	265	14.5	38	80	4	240	tbd	378	+68	225	18	300	M12x30
ASM8-9300	230	265	14.5	42	110	4	240	tbd	446	+68	225	18	300	M12x30
ASM8-11500	230	265	14.5	42	110	4	240	tbd	514	+68	225	18	300	M12x30



### Winding data for operation at 90 to 320Vdc bus voltage:

Motor model	Nominal torque	Nominal current	Nominal speed	Peak torque	Peak current	Voltage constant	Torque constant	Resistance (Ph.-Ph.)	Inductance (Ph.-Ph.)	Rotor inertia	Weight (w/o brake)
	$M_n$	$I_n$	$n_n$	$M_{max}$	$I_{max}$	$K_E$	$K_T$	$R_{2ph}$	$L_{2ph}$	$J$	$m$
	Nm	A <sub>eff.</sub>	min <sup>-1</sup>	Nm	A <sub>eff.</sub>	V <sub>dc</sub> /1000	Nm/ A <sub>eff.</sub>	Ω	mH	kgcm <sup>2</sup>	kg
ASM5-0660-30-320	5.7	6.8	3000	19.8	38	73.5	0.86	1.44	9.6	4.0	7.5
ASM5-1050-30-320	8.8	10.5	3000	31.5	61	73.5	0.86	0.61	5.5	6.2	10.0
ASM5-1350-30-320	11.0	14.5	3000	40.5	87	66.5	0.78	0.38	3.6	7.3	11.2
ASM5-1700-30-320	14.5	18.5	3000	51.0	106	68.6	0.80	0.28	2.9	9.5	13.7
ASM5-2200-30-320	17	20.2	3000	66.0	127	73.5	0.86	0.24	2.6	11.7	16.2
ASM6-1350-30-320	13	14.6	3000	40.5	62	79.2	0.93	0.34	4.2	13.1	13.9
ASM6-1900-30-320	17	19.0	3000	57	87	79.2	0.93	0.19	2.8	18.7	18.2
ASM6-2200-30-320	19	20.5	3000	66	97	82.0	0.96	0.17	2.6	21.5	20.3
ASM6-2900-30-320	24	26.8	3000	87	132	79.2	0.93	0.09	1.7	32.8	26.7
ASM7-2700-30-320	21	23.7	3000	27	110	82.0	0.96	0.15	2.2	36	23.5
ASM7-3200-30-320	23	25.9	3000	32	128	83.4	0.98	0.12	1.3	39	26.0
ASM7-4000-30-320	26	31.8	3000	40	172	77.8	0.91	0.07	0.8	45	31.5

### Winding data for operation at 320 to 680Vdc bus voltage:

Motortyp	Nennmoment	Nennstrom	Nenn Drehzahl	Spitzenmoment	Spitzenstrom	Spannungskonstante	Drehmomentkonstante	Widerstand (Ph.-Ph.)	Induktivität (Ph.-Ph.)	Rotorträgheit	Gewicht (o. Bremse)
	$M_n$	$I_n$	$n_n$	$M_{max}$	$I_{max}$	$K_E$	$K_T$	$R_{2ph}$	$L_{2ph}$	$J$	$m$
	Nm	A <sub>eff.</sub>	min <sup>-1</sup>	Nm	A <sub>eff.</sub>	V <sub>dc</sub> /1000	Nm/ A <sub>eff.</sub>	Ω	mH	kgcm <sup>2</sup>	kg
ASM5-0660-30-560	5.7	4.0	3000	19.8	23	124.5	1.46	4.51	27.8	4.0	7.5
ASM5-1050-30-560	8.8	6.3	3000	31.5	36	123.0	1.44	1.70	15.2	6.2	10.0
ASM5-1350-30-560	11.0	9.5	3000	40.5	56	103.2	1.21	0.95	9.0	7.3	11.2
ASM5-1700-30-560	14.5	10.0	3000	51.0	57	127.3	1.49	0.95	10.0	9.5	13.7
ASM5-2200-30-560	17	13.0	3000	66.0	82	114.5	1.34	0.54	5.9	11.7	16.2
ASM6-1350-30-560	13	8.2	3000	40.5	35	141.4	1.65	1.10	13.5	13.1	13.9
ASM6-1900-30-560	17	10.6	3000	57	49	141.4	1.65	0.61	9.0	18.7	18.2
ASM6-2200-30-560	19	13.1	3000	66	62	128.7	1.51	0.41	6.4	21.5	20.3
ASM6-2900-30-560	24	14.7	3000	87	73	144.2	1.69	0.31	5.6	32.8	26.7
ASM6-3500-30-560	26	18.2	3000	105	99	127.3	1.49	0.16	3.2	46.0	35.2
ASM7-2700-30-560	21	13.5	3000	27	62	144.2	1.69	0.43	4.4	36	23.5
ASM7-3200-30-560	23	15.0	3000	32	74	144.2	1.69	0.35	3.8	39	26.0
ASM7-4000-30-560	26	17.9	3000	40	96	138.6	1.62	0.23	2.7	45	31.5
ASM8-4000-30-560	30	17.8	3000	120	85	157.0	1.84	0.25	5.7	76	41
ASM8-6800-30-560	50	31.1	3000	204	156	145.7	1.70	0.10	2.5	114	56
ASM8-9300-20-560	70	25.3	2000	279	129	240.4	2.81	0.15	4.8	153	73
ASM8-11500-20-560	85	32.4	2000	345	164	233.3	2.73	0.11	3.4	190	89

Andere Wicklungen auf Anfrage.

### Connector pinout:

Power (8 pole, Size 1)		TTL-Encoder (17 pin)		Resolver (12 pin)	
1, 4, 3	U, V, W	10, 7	+5V, 0V	8, 4	S1 (sin +), S3 (sin-)
2	ground	3, 4	A, /A	7, 3	S2 (cos +), S4 (cos-)
A, B	brake + / -	1, 2	B, /B	9, 5	R1, R2 (Speisung + / -)
		5, 6	Z, /Z	2, 6	thermal protection TH+/TH-

		8, 9	thermal protection TH+/TH-		
		15/12, 16/13, 17/14	Halls (U /U, V /V, W /W)		