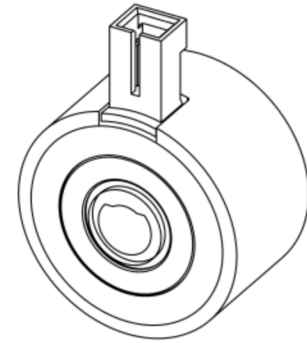
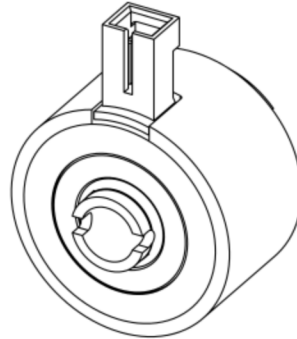
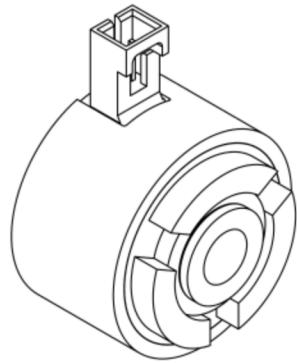


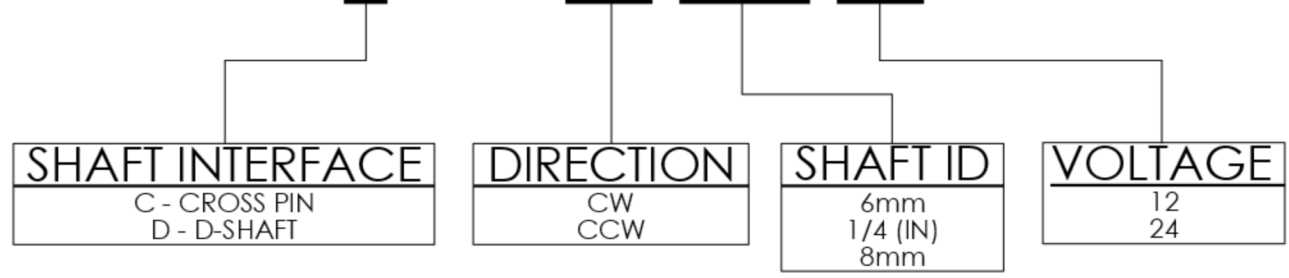
CURRENTLY AVAILABLE CATALOG OPTIONS	
CATALOG CODE	
EC30XP-CW-8mm-24	
EC30XP-CCW-8mm-24	
EC30XP-CW-8mm-12	
EC30XP-CCW-8mm-12	
EC30XP-CW-6mm-24	
EC30XP-CCW-6mm-24	
EC30XP-CW-1/4-24	
EC30XP-CCW-1/4-24	
EC30XP-CW-6mm-12	
EC30XP-CCW-6mm-12	
EC30XP-CW-1/4-12	
EC30XP-CCW-1/4-12	
ED30XP-CW-8mm-24	
ED30XP-CCW-8mm-24	
ED30XP-CW-8mm-12	
ED30XP-CCW-8mm-12	
ED30XP-CW-6mm-24	
ED30XP-CCW-6mm-24	
ED30XP-CW-1/4-24	
ED30XP-CCW-1/4-24	
ED30XP-CW-6mm-12	
ED30XP-CCW-6mm-12	
ED30XP-CW-1/4-12	
ED30XP-CCW-1/4-12	



CROSS PIN DESIGN

D-SHAFT DESIGN

# CATALOG CODE EX30XP-XX-XXX-XX



SPECIFICATIONS SUBJECT TO CHANGE

INTERPRET PRINT PER ASME Y14.5M-1994  
THIS PRINT IS THE CONFIDENTIAL PROPERTY OF REELL PRECISION MFG.  
THIRD ANGLE PROJECTION

LEVEL	DESCRIPTION	DRAWN	DATE	APPROVED
DRAWN:	DDF	DATE:	02-16-86	
CHECKED:	DDF	DATE:	07-24-86	
APPROVED:	GDL	DATE:	07-24-86	
REVISED:	06-11-20	DIMS:	[IN]mm	

<b>REELL</b>		<b>SALES DRAWING</b>	
REELL PRECISION MANUFACTURING 1259 WILLOW LAKE BOULEVARD SAINT PAUL, MINNESOTA 55110-5103, USA		DESCRIPTION: <b>EX30XP</b>	REV: <b>J</b>
SCALE: 1:1	DO NOT SCALE DRAWING	SHEET 1 OF 3	

REELL RADIAL ELECTRIC CLUTCH

SHAFT NOM. I.D.	CROSS PIN SIZE	ONE MILLION CYCLE TORQUE RATING: [30 Lb-in] 3.45 Nm TOTAL LOAD.
6mm	2.5 mm	CROSS PIN SHAFT 8mm BORE SHOWN
1/4 IN	3/32 IN	
8mm	2.5 mm	

NOTES:

- CONNECTOR PINS ARE [.025 x .025] 0.64 x 0.64 SQUARE. THE FOLLOWING MATING CONNECTORS CAN BE USED.  
 TERMINAL: POLARIZED LATCHING CONNECTOR, INSULATION DISPLACEMENT CONTACTS  
 AMP NO. 5-103956-1  
 ALTERNATE TERMINAL:  
 MOLEX NO. 14-60-0022  
 A LEAD SET WITH MATING CONNECTOR AND [15 INCH] 380mm LEADS IS AVAILABLE. REELL CATALOG CODE LS-01-380.
- RESISTANCE: 12 VOLTS 44 OHMS AT [68°F] 20°C.  
 24 VOLTS 175 OHMS AT [68°F] 20°C.

D

D

C

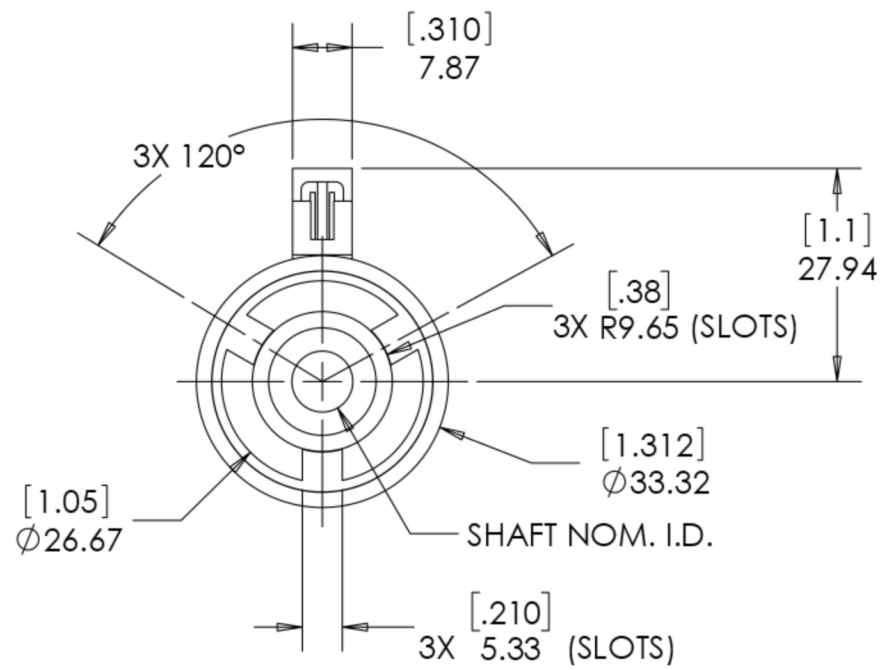
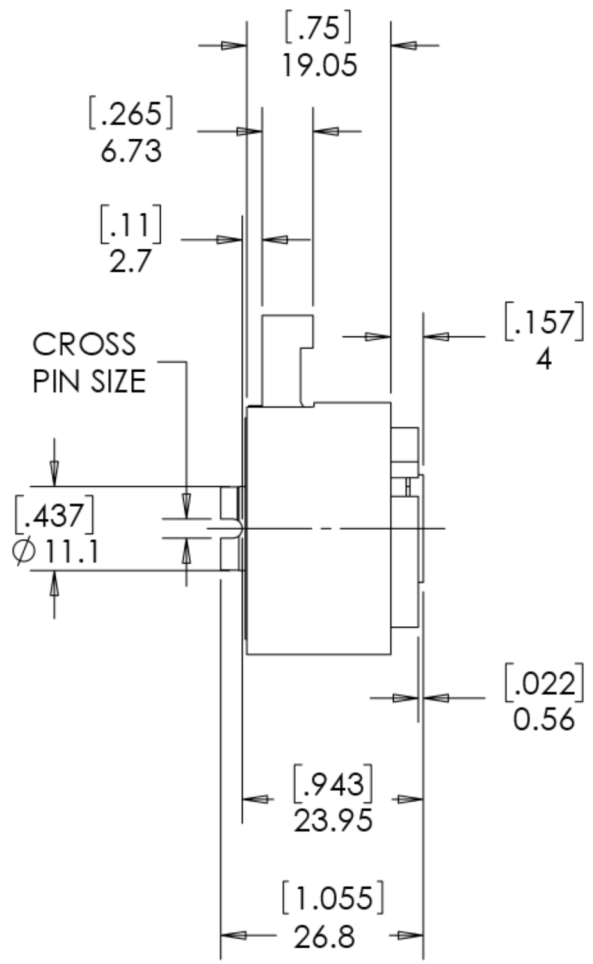
C

B

B

A

A



ALL DIMENSIONS REFERENCE  
SEE CAD MODEL FOR UNSPECIFIED FEATURES.

SPECIFICATIONS SUBJECT TO CHANGE

INTERPRET PRINT PER  
ASME Y14.5M-1994  
THIS PRINT IS THE  
CONFIDENTIAL PROPERTY  
OF REELL PRECISION MFG.

THIRD ANGLE PROJECTION

LEVEL	DESCRIPTION	DRAWN	DATE	APPROVED
DRAWN:	DDF	DATE:	02-16-86	
CHECKED:	DDF	DATE:	07-24-86	
APPROVED:	GDL	DATE:	07-24-86	
REVISED:	06-11-20	DIMS:	[IN]mm	

TITLE: <b>SALES DRAWING</b>	
DESCRIPTION: <b>EX30XP</b>	REV: <b>J</b>
SCALE: 1:1	DO NOT SCALE DRAWING
SHEET 2 OF 3	



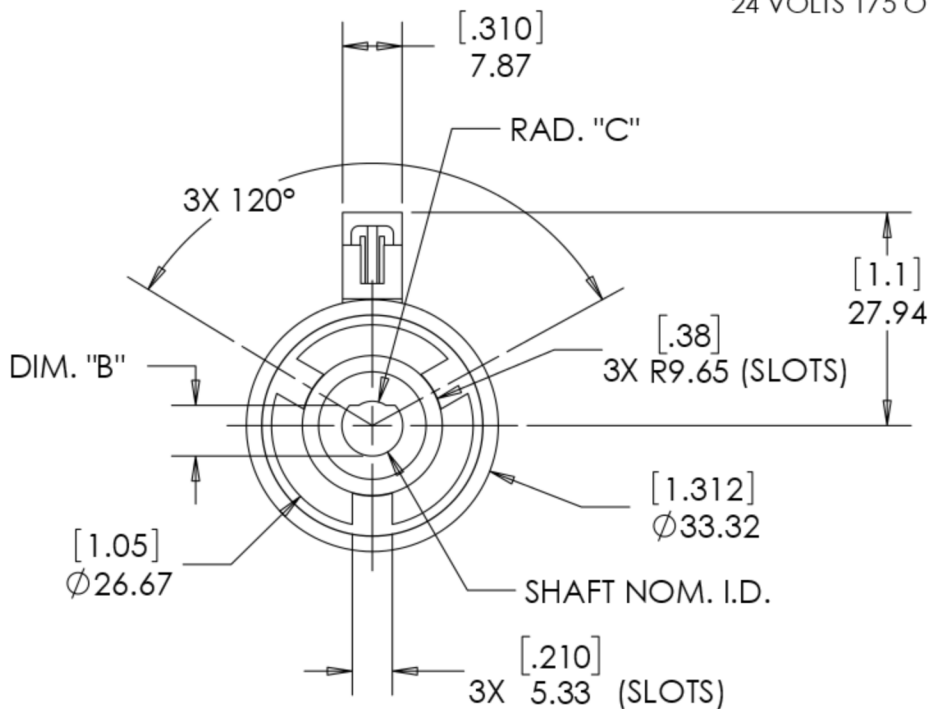
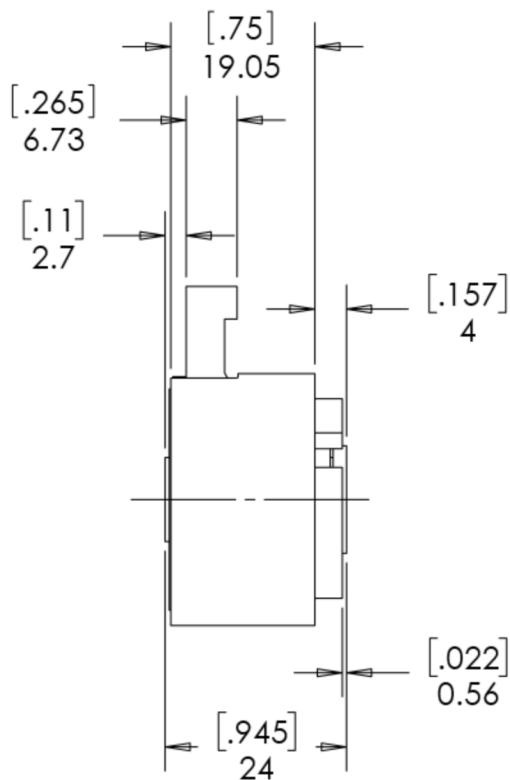
REELL PRECISION MANUFACTURING  
1259 WILLOW LAKE BOULEVARD  
SAINT PAUL, MINNESOTA 55110-5103, USA

REELL RADIAL ELECTRIC CLUTCH

SHAFT NOM. I.D.	DIM. "B"	RAD. "C"	ONE MILLION CYCLE TORQUE RATING: [30 Lb-in] 3.45 Nm TOTAL LOAD. D-SHAFT 8mm BORE SHOWN
6mm	5.01 mm	2.51 mm	
1/4 IN	.2115 IN	.099 IN	
8mm	6.64 mm	3.2 mm	

NOTES:

- CONNECTOR PINS ARE [.025 x .025] 0.64 x 0.64 SQUARE. THE FOLLOWING MATING CONNECTORS CAN BE USED.  
 TERMINAL: POLARIZED LATCHING CONNECTOR, INSULATION DISPLACEMENT CONTACTS  
 AMP NO. 5-103956-1  
 ALTERNATE TERMINAL:  
 MOLEX NO. 14-60-0022  
 A LEAD SET WITH MATING CONNECTOR AND [15 INCH] 380mm LEADS IS AVAILABLE. REELL CATALOG CODE LS-01-380.
- RESISTANCE: 12 VOLTS 44 OHMS AT [68°F] 20°C.  
 24 VOLTS 175 OHMS AT [68°F] 20°C.



ALL DIMENSIONS REFERENCE  
SEE CAD MODEL FOR UNSPECIFIED FEATURES.

SPECIFICATIONS SUBJECT TO CHANGE

INTERPRET PRINT PER  
ASME Y14.5M-1994  
THIS PRINT IS THE  
CONFIDENTIAL PROPERTY  
OF REELL PRECISION MFG.

THIRD ANGLE PROJECTION

LEVEL	DESCRIPTION	DRAWN	DATE	APPROVED
DRAWN:	DDF	DATE:	02-16-86	
CHECKED:	DDF	DATE:	07-24-86	
APPROVED:	GDL	DATE:	07-24-86	
REVISED:	06-11-20	DIMS:	[IN]mm	

TITLE:	
<b>SALES DRAWING</b>	
DESCRIPTION:	REV:
<b>EX30XP</b>	<b>J</b>
SCALE: 1:1	SHEET 3 OF 3



REELL PRECISION MANUFACTURING  
1259 WILLOW LAKE BOULEVARD  
SAINT PAUL, MINNESOTA 55110-5103, USA

DO NOT SCALE DRAWING