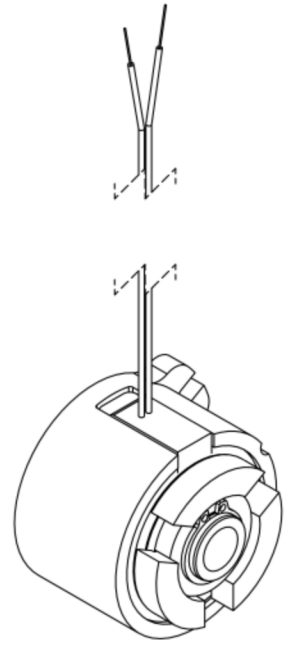
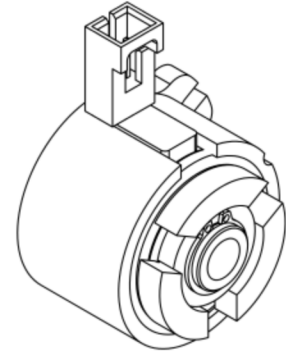
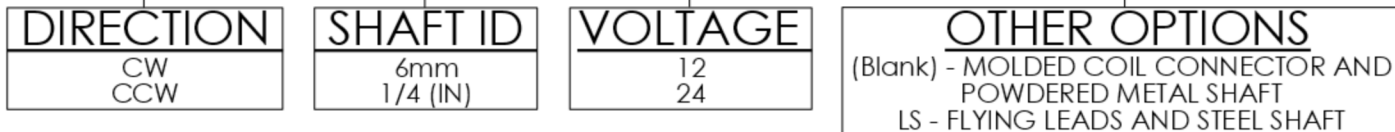


CURRENTLY AVAILABLE CATALOG OPTIONS	
CATALOG CODE	
EC25LL-CW-1/4-12	
EC25LL-CW-1/4-24	
EC25LL-CW-6mm-12	
EC25LL-CW-6mm-24	
EC25LL-CCW-1/4-12	
EC25LL-CCW-1/4-24	
EC25LL-CCW-6mm-12	
EC25LL-CCW-6mm-24	
EC25LL-CW-1/4-12-LS	
EC25LL-CW-1/4-24-LS	
EC25LL-CCW-1/4-12-LS	
EC25LL-CCW-1/4-24-LS	



CATALOG CODE EC25LL-XX-XXX-XX-X



SPECIFICATIONS SUBJECT TO CHANGE

INTERPRET PRINT PER ASME Y14.5M-1994
THIS PRINT IS THE CONFIDENTIAL PROPERTY OF REELL PRECISION MFG.
THIRD ANGLE PROJECTION

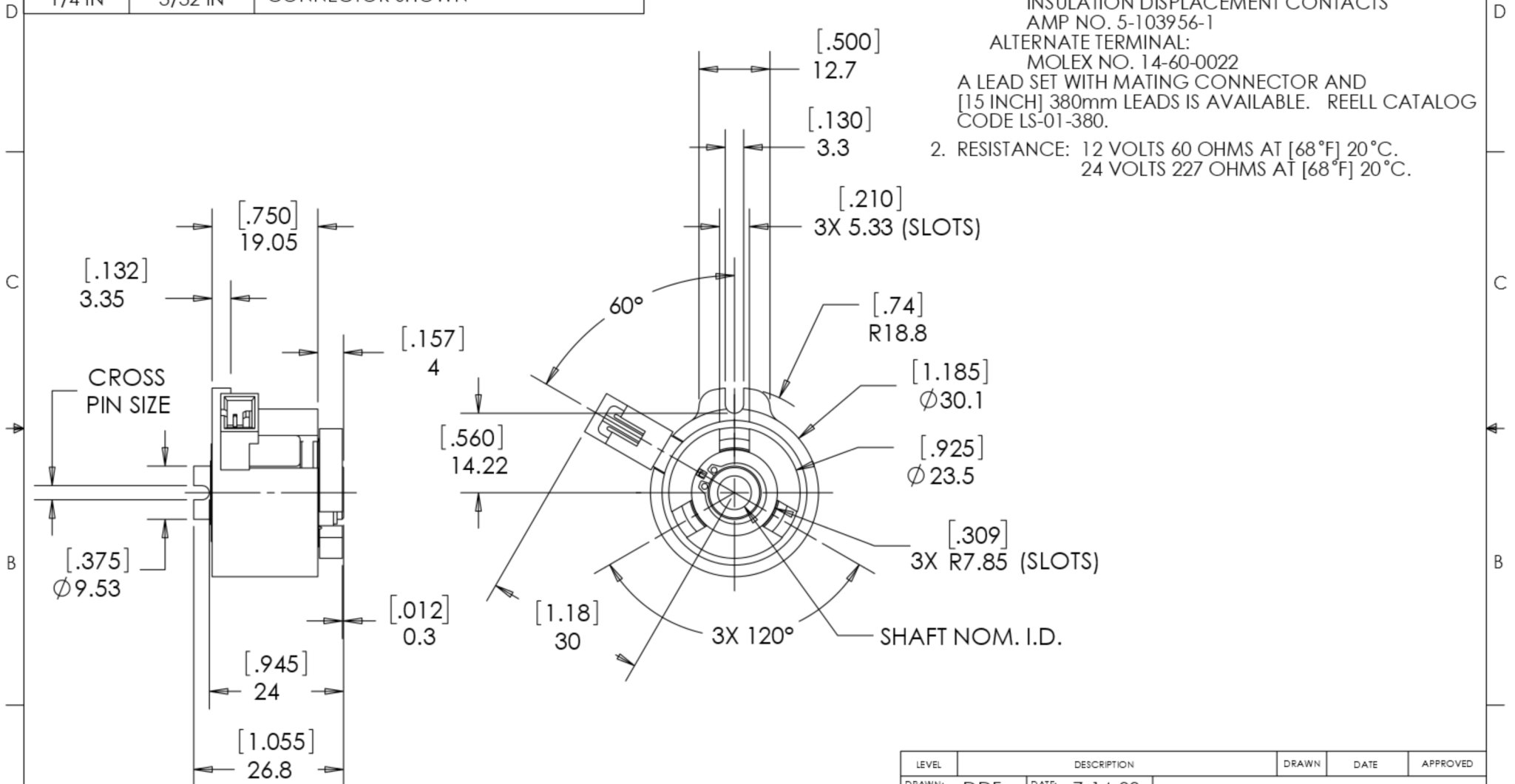
LEVEL	DESCRIPTION	DRAWN	DATE	APPROVED								
DRAWN: DDF	DATE: 7-14-00	<table border="1"> <tr> <td colspan="2">TITLE: SALES DRAWING</td> </tr> <tr> <td>DESCRIPTION: EC25LL</td> <td>REV: F</td> </tr> <tr> <td>SCALE: 1:1</td> <td>DO NOT SCALE DRAWING</td> </tr> <tr> <td colspan="2">SHEET 1 OF 3</td> </tr> </table>			TITLE: SALES DRAWING		DESCRIPTION: EC25LL	REV: F	SCALE: 1:1	DO NOT SCALE DRAWING	SHEET 1 OF 3	
TITLE: SALES DRAWING												
DESCRIPTION: EC25LL	REV: F											
SCALE: 1:1	DO NOT SCALE DRAWING											
SHEET 1 OF 3												
CHECKED: RGW	DATE: 7-14-00											
APPROVED: RGW	DATE: 7-14-00											
REVISED: 6-4-20	DIMS: [IN]mm											
		<p>REELL PRECISION MANUFACTURING 1259 WILLOW LAKE BOULEVARD SAINT PAUL, MINNESOTA 55110-5103, USA</p>										

REELL RADIAL ELECTRIC CLUTCH

SHAFT NOM. I.D.	CROSS PIN SIZE	ONE MILLION CYCLE TORQUE RATING: [25 Lb-in] 2.8 Nm TOTAL LOAD.
6mm	2.5mm	6mm BORE MOLDED COIL CONNECTOR SHOWN
1/4 IN	3/32 IN	

NOTES:

- CONNECTOR PINS ARE [.025 x .025] 0.64 x 0.64 SQUARE. THE FOLLOWING MATING CONNECTORS CAN BE USED.
 TERMINAL: POLARIZED LATCHING CONNECTOR, INSULATION DISPLACEMENT CONTACTS
 AMP NO. 5-103956-1
 ALTERNATE TERMINAL:
 MOLEX NO. 14-60-0022
 A LEAD SET WITH MATING CONNECTOR AND [15 INCH] 380mm LEADS IS AVAILABLE. REELL CATALOG CODE LS-01-380.
- RESISTANCE: 12 VOLTS 60 OHMS AT [68°F] 20°C.
 24 VOLTS 227 OHMS AT [68°F] 20°C.

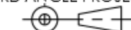


ALL DIMENSIONS REFERENCE
SEE CAD MODEL FOR UNSPECIFIED FEATURES.

SPECIFICATIONS SUBJECT TO CHANGE

INTERPRET PRINT PER
ASME Y14.5M-1994
THIS PRINT IS THE
CONFIDENTIAL PROPERTY
OF REELL PRECISION MFG.

THIRD ANGLE PROJECTION



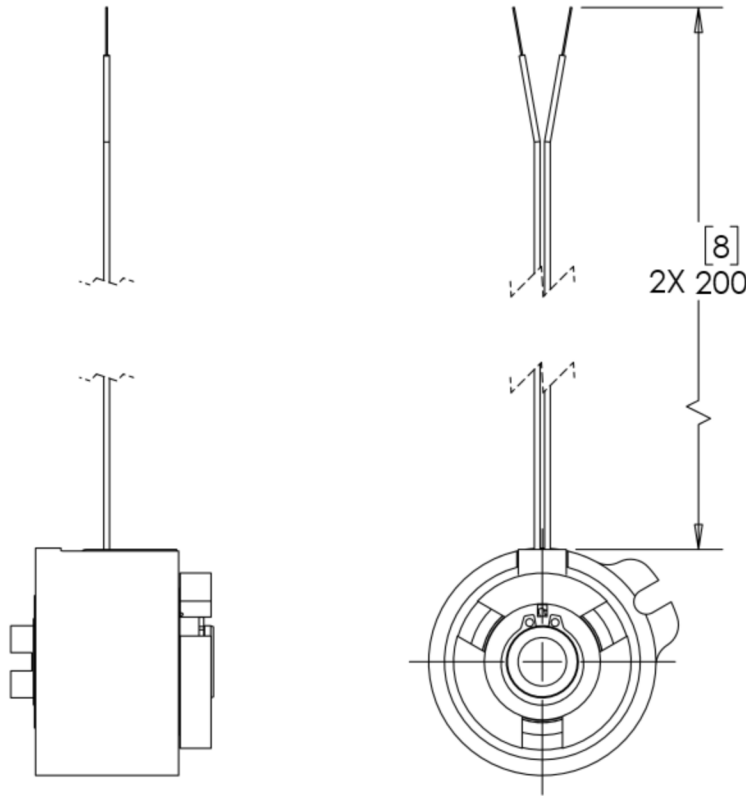
LEVEL	DESCRIPTION	DRAWN	DATE	APPROVED
DRAWN: DDF	DATE: 7-14-00	TITLE: SALES DRAWING DESCRIPTION: EC25LL REV: F SCALE: 1:1 DO NOT SCALE DRAWING SHEET 2 OF 3		
CHECKED: RGW	DATE: 7-14-00			
APPROVED: RGW	DATE: 7-14-00			
REVISED: 6-4-20	DIMS: [IN]mm			
		REELL PRECISION MANUFACTURING 1259 WILLOW LAKE BOULEVARD SAINT PAUL, MINNESOTA 55110-5103, USA		

8 7 6 5 4 3 2 1

NOTES:

- LEADS - [8 INCH] 200mm NO. 24 AWG STRANDED WIRE-CROSS LINKED POLYETHYLENE INSULATION [.011] 0.28 THICK. UL 3265 & CSA AWM APPROVED. RATED FOR 150 V & 125°C.

FLYING LEAD AND STEEL SHAFT OPTION:



ALL DIMENSIONS REFERENCE SEE CAD MODEL FOR UNSPECIFIED FEATURES.

SPECIFICATIONS SUBJECT TO CHANGE

LEVEL	DESCRIPTION		DRAWN	DATE	APPROVED
DRAWN:	DDF	DATE: 7-14-00	TITLE: SALES DRAWING DESCRIPTION: EC25LL SCALE: 1:1 DO NOT SCALE DRAWING SHEET 3 OF 3		
CHECKED:	RGW	DATE: 7-14-00			
APPROVED:	RGW	DATE: 7-14-00			
REVISED:	6-4-20	DIMS: [IN]mm			
INTERPRET PRINT PER ASME Y14.5M-1994 THIS PRINT IS THE CONFIDENTIAL PROPERTY OF REELL PRECISION MFG.				REELL PRECISION MANUFACTURING 1259 WILLOW LAKE BOULEVARD SAINT PAUL, MINNESOTA 55110-5103, USA	
THIRD ANGLE PROJECTION 					

D
C
B
A

D
C
B
A

8 7 6 5 4 3 2 1