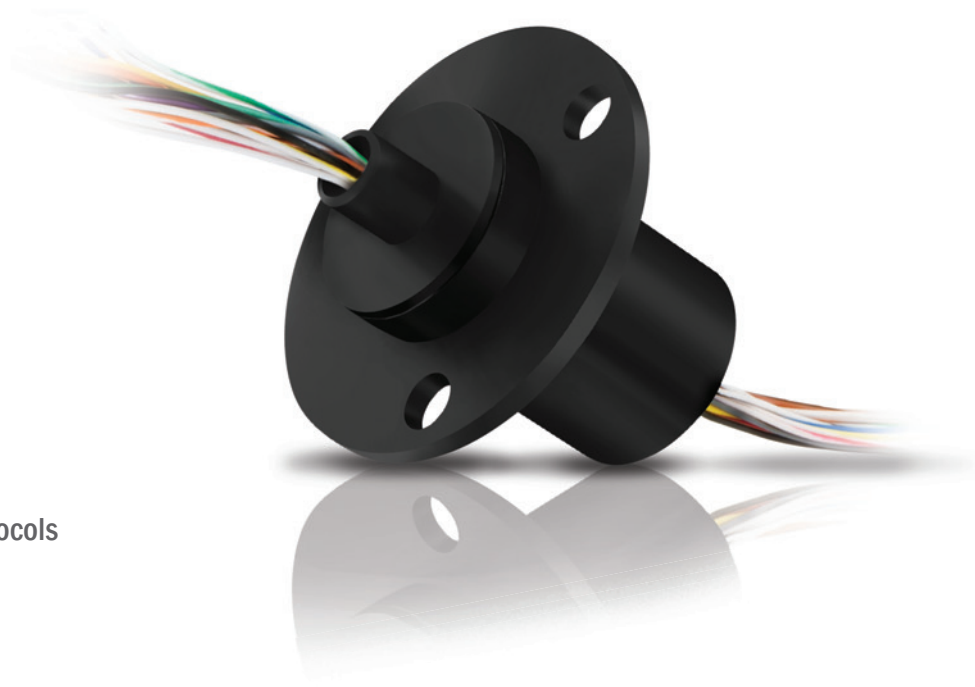


# ES SERIES

## Series Overview

- + Compact Capsule Design
- + Low Torque Design
- + Suitable for Analog or Digital Signals
- + High Quality Gold on Gold Contacts
- + Low Electrical Noise
- + Precision Ball Bearings
- + Data Speeds up to 50 Megabits / Sec\*
- + Compatible With a Range of Data Bus Protocols



The ES Series electrical slip ring is a rotating assembly used to transfer power, control circuits or data (analog / digital) from stationary inlets to rotating outlets.

Versatile and compact, the ES Series electrical slip rings feature a low torque design with gold-on-gold contacts and offer low electrical noise. The ES Series also includes flexible, color-coded lead wires suitable for transferring analog and digital signals. Standard models are available in 6, 12, 18, 24, 36, and 56 circuits.

## Specifications

Max. Operating Speed	250 RPM Continuous**
Standard Circuit Options	6, 12, 18, 24, 36, 56
Voltage	240***
Amps / Circuit	2
Lead / Size Type	28/26 gauge silver plated copper, Teflon®
Contact Material	Gold
Temperature Range	-40 °F to 176 °F (-40 °C to +80 °C)

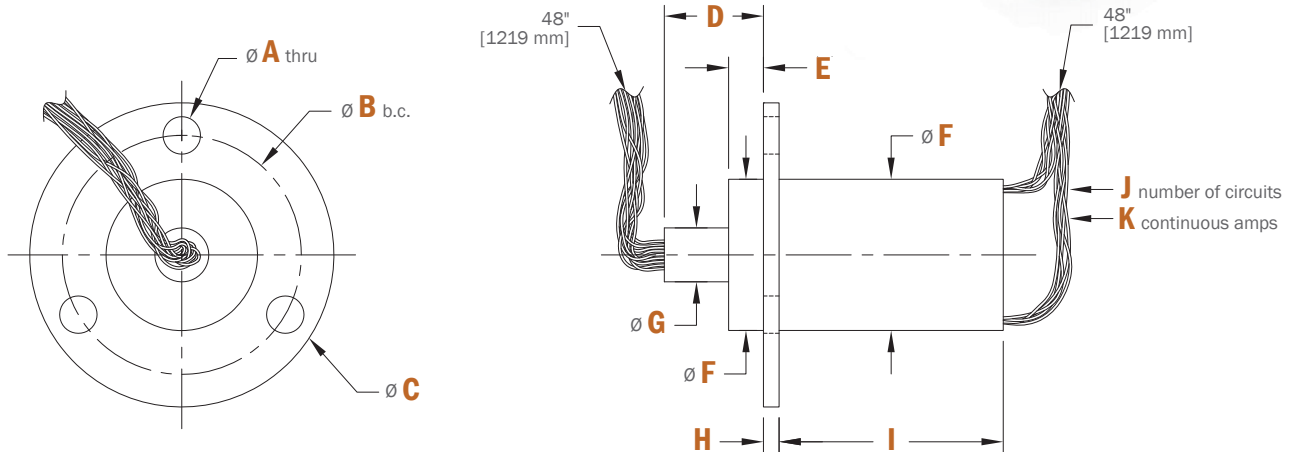
\* For higher data speeds see our ESE & ESET Series slip rings

\*\* The max operating speed for models ES6A & ES12A is 100 RPM

\*\*\* Voltage for ES6A & ES12A is 120

# ES SERIES

## Dimensions



	ES6A	ES6	ES12A	ES12
<b>A</b>	.129" [3.28mm]	.215" [5.50mm]	.129" [3.28mm]	.215" [5.50mm]
<b>B</b>	.725" [18.42mm]	1.375" [34.93mm]	.725" [18.42mm]	1.375" [34.93mm]
<b>C</b>	.95" [24.13mm]	1.75" [44.45mm]	.95" [24.13mm]	1.75" [44.45mm]
<b>D</b>	.47" [11.94mm]	.57" [14.48mm]	.47" [11.94mm]	.57" [14.48mm]
<b>E</b>	.20" [5.08mm]	.20" [5.08mm]	.20" [5.08mm]	.20" [5.08mm]
<b>F</b>	.50" [12.70mm]	.87" [22.10mm]	.50" [12.70mm]	.87" [22.10mm]
<b>G</b>	.19" [4.83mm]	.31" [7.87mm]	.19" [4.83mm]	.31" [7.87mm]
<b>H</b>	.04" [1.02mm]	.09" [2.36mm]	.04" [1.02mm]	.09" [2.36mm]
<b>I</b>	.34" [8.64mm]	.48" [12.19mm]	.59" [14.99mm]	.75" [19.05mm]
<b>J</b>	6 Circuits	6 Circuits	12 Circuits	12 Circuits
<b>K</b>	2 Amps	2 Amps	2 Amps	2 Amps

	ES18	ES24	ES36	ES56
<b>A</b>	.215" [5.50mm]	.215" [5.50mm]	.220" [5.60mm]	.220" [5.60mm]
<b>B</b>	1.375" [34.93mm]	1.375" [34.93mm]	1.410" [35.81mm]	1.410" [35.81mm]
<b>C</b>	1.75" [44.45mm]	1.75" [44.45mm]	1.75" [44.45mm]	1.75" [44.45mm]
<b>D</b>	.57" [14.48mm]	.57" [14.48mm]	.48" [12.19mm]	.48" [12.19mm]
<b>E</b>	.20" [5.08mm]	.20" [5.08mm]	.11" [2.80mm]	.11" [2.80mm]
<b>F</b>	.87" [22.10mm]	.87" [22.10mm]	1.00" [25.40mm]	1.00" [25.40mm]
<b>G</b>	.31" [7.87mm]	.31" [7.87mm]	.38" [9.53mm]	.38" [9.53mm]
<b>H</b>	.09" [2.36mm]	.09" [2.36mm]	.06" [1.50mm]	.06" [1.50mm]
<b>I</b>	1.02" [25.91mm]	1.29" [32.77mm]	2.06" [75.30mm]	2.96" [75.30mm]
<b>J</b>	18 Circuits	24 Circuits	36 Circuits	56 Circuits
<b>K</b>	2 Amps	2 Amps	2 Amps	2 Amps

# ES SERIES

## Wire Color Codes

ES6		
Tag #	Color	Description/Awg
1	BLK	2A/28
2	BRN	
3	RED	
4	ORN	
5	YEL	
6	GRN	

ES6A		
Tag #	Color	Description/Awg
1	BLK	2A/26
2	BRN	
3	RED	
4	ORN	
5	YEL	
6	GRN	

ES12		
Tag #	Color	Description/Awg
1	BLK	2A/28
2	BRN	
3	RED	
4	ORN	
5	YEL	
6	GRN	
7	BLU	
8	VIO	
9	GRY	
10	WHT	
11	WHT-BLK	
12	WHT-BRN	

ES12A		
Tag #	Color	Description/Awg
1	BLK	2A/26
2	BRN	
3	RED	
4	ORN	
5	YEL	
6	GRN	
7	BLU	
8	VIO	
9	GRY	
10	WHT	
11	WHT-BLK	
12	WHT-BRN	

ES18		
Tag #	Color	Description/Awg
1	BLK	2A/28
2	BRN	
3	RED	
4	ORN	
5	YEL	
6	GRN	
7	BLU	
8	VIO	
9	GRY	
10	WHT	
11	WHT-BLK	
12	WHT-BRN	
13	WHT-RED	
14	WHT-ORN	
15	WHT-YEL	
16	WHT-GRN	
17	WHT-BLU	
18	WHT-VIO	

# ES SERIES

## Wire Color Codes

ES24			ES36			ES56		
Tag #	Color	Description/Awg	Tag #	Color	Description/Awg	Tag #	Color	Description/Awg
1	BLK	2A/28	1	BLK	2A/26	1	BLK	2A/26
2	BRN							
3	RED							
4	ORN							
5	YEL							
6	GRN							
7	BLU							
8	VIO							
9	GRY							
10	WHT							
11	WHT-BLK							
12	WHT-BRN							
13	WHT-RED							
14	WHT-ORN							
15	WHT-YEL							
16	WHT-GRN							
17	WHT-BLU							
18	WHT-VIO							
19	WHT-GRY							
20	WHT-BLK-BRN							
21	WHT-BLK-RED							
22	WHT-BLK-ORN							
23	WHT-BLK-YEL							
24	WHT-BLK-GRN							
19	BLK	2A/26	20	BRN				
20	BRN							
21	RED							
22	ORN							
23	YEL							
24	GRN							
25	BLU							
26	VIO							
27	GRY							
28	WHT							
29	WHT-BLK							
30	WHT-BRN							
31	WHT-RED							
32	WHT-ORN							
33	WHT-YEL							
34	WHT-GRN							
35	WHT-BLU							
36	WHT-VIO							
37	BLK		2A/26	38	BRN			
38	BRN							
39	RED							
40	ORN							
41	YEL							
42	GRN							
43	BLU							
44	VIO							
45	GRY							
46	WHT							
47	WHT-BLK							
48	WHT-BRN							
49	WHT-RED							
50	WHT-ORN							
51	WHT-YEL							
52	WHT-GRN							
53	WHT-BLU							
54	WHT-VIO							
55	BLK							
56	BRN							