

**CATALOG CODE**  
**SB-X.X-XX-XXX**

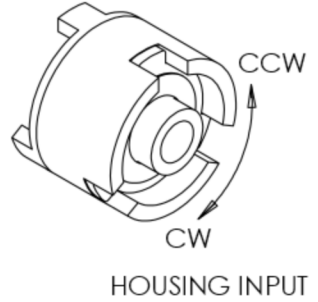
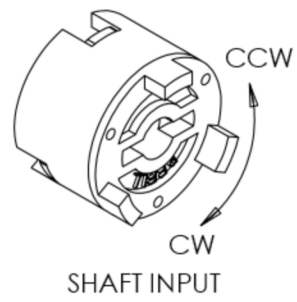
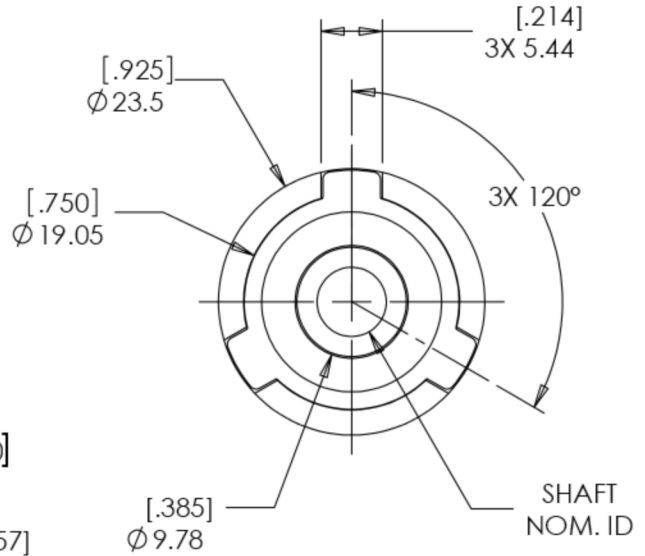
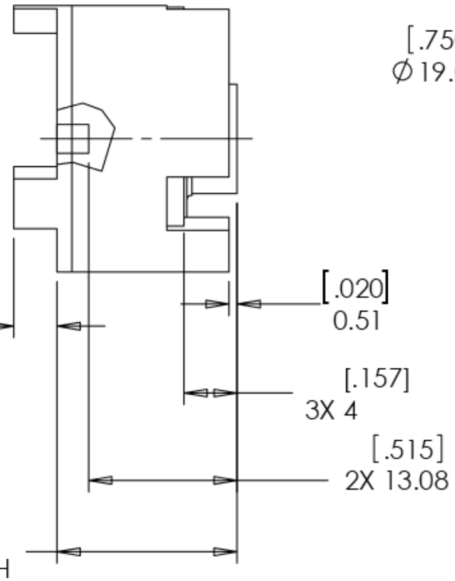
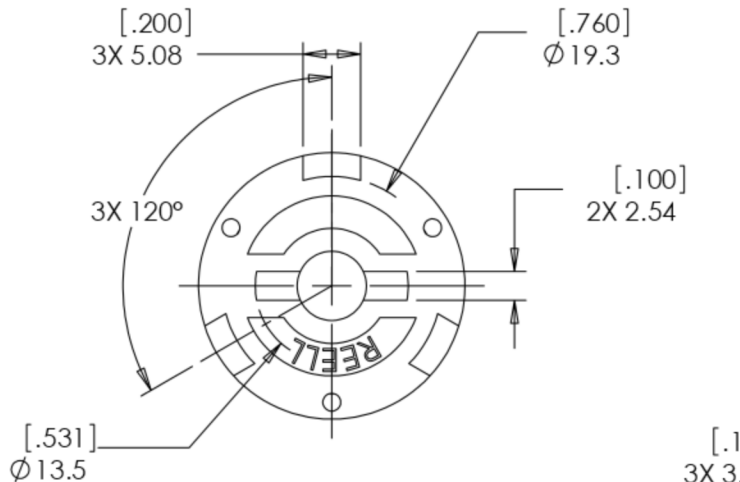
TORQUE (Nm)
0.1
0.2
0.4
0.7

DIRECTION
CW
CCW

BORE (SHAFT INTERFACE)
6mm
1/4 (IN)
8mm

SHAFT NOM. ID
6mm
1/4"
8mm

DYNAMIC TORQUE	
0.1 ± 0.02 Nm	[0.88 ± 0.183 LB-IN]
0.2 ± 0.04 Nm	[1.77 ± 0.355 LB-IN]
0.4 ± 0.08 Nm	[3.54 ± 0.709 LB-IN]
0.7 ± 0.14 Nm	[6.2 ± 1.244 LB-IN]



ALL DIMENSIONS REFERENCE  
SEE CAD MODEL FOR  
UNSPECIFIED FEATURES

SPECIFICATIONS SUBJECT TO CHANGE

	ECO NO: 02639	PART LIFECYCLE: RELEASED
	APPROVED BY: BOB WAHLSTEDT	DEVELOPMENT CYCLE: PRODUCTION
	APPROVED DATE: 18MAY20	DESCRIPTION:
	PROJECT NO: 0	<b>SALES DRAWING</b>
REELL PRECISION MANUFACTURING 1259 WILLOW LAKE BOULEVARD SAINT PAUL, MINNESOTA 55110-5103, USA	ENGINEER: BOB WAHLSTEDT	PART NO: <b>SB</b>
THIS PRINT IS THE CONFIDENTIAL PROPERTY OF REELL PRECISION MFG.	DRAWN BY: DERICK OFFOR	
INTERPRET PRINT PER ASME Y14.5M-2009	THIRD ANGLE PROJECTION 	SCALE: 1.5:1
	DIMENSIONS: mm [IN]	DO NOT SCALE DRAWING
		SHEET 1 OF 1