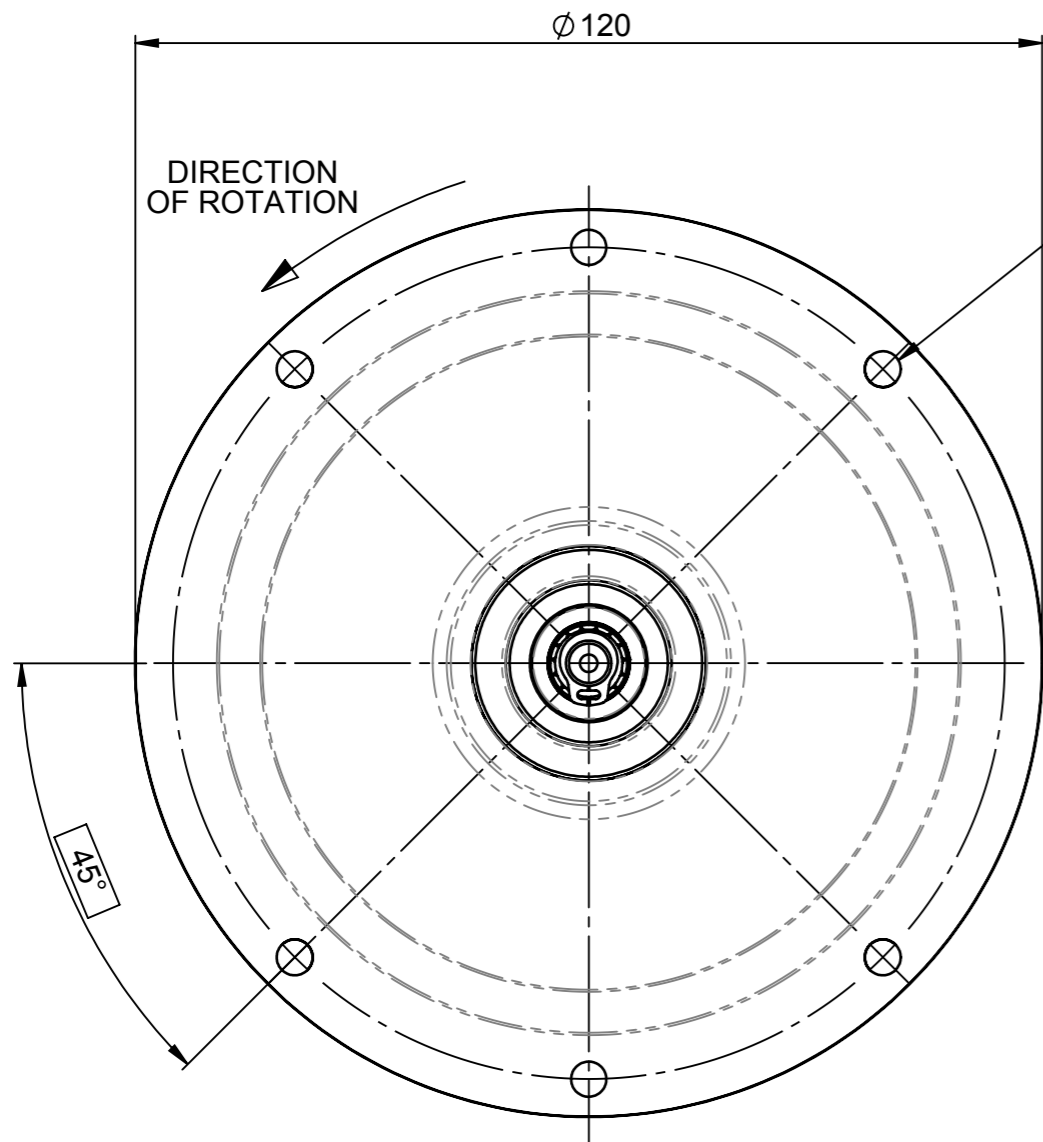
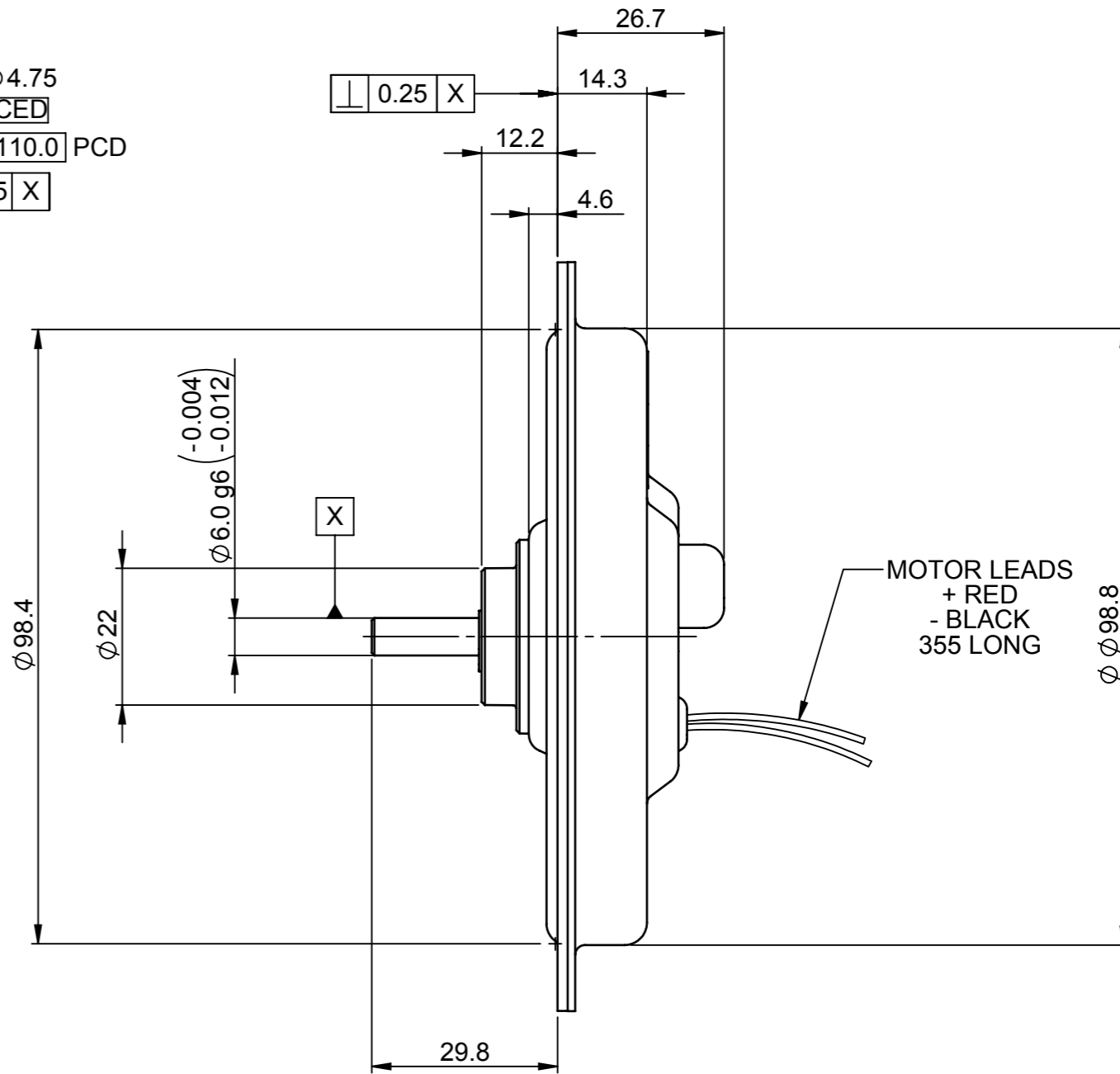


THIRD ANGLE PROJECTION



4 HOLES $\phi 4.75$
EQUISPACED
AS SHOWN ON 110.0 PCD

$\phi \pm 0.15$



MOTOR RATINGS.

VOLTAGE.....14.5 VDC
CURRENT.....6.9 Amps
TORQUE.....13.1 Ncm
SPEED.....3000 r.p.m
POWER.....41 Watts

MOTOR CONSTANTS.

VOLTAGE.....Ke 2.3 V/1000 r.p.m
TORQUE.....Kt 2.19 Ncm/ Amp
DAMPING.....Kd 0.30 Ncm / 1000 r.p.m
FRICTION.....Tf 1.2 Ncm
TERMINAL RESISTANCE.....1.1 Ohm

GENERAL ASSEMBLY DETAILS
SEE DRG. 539594

TEST SPEC. TSM 001

LAST CHANGE DETAIL \triangle					KEY CHARACTERISTICS IDENTIFIED BY THE FOLLOWING SYMBOL \diamond		TOLERANCES UNLESS STATED		DIMENSIONS mm		UNLESS OTHERWISE STATED CHAMFER OR RADII 0.13 (0.005") MAX. REMOVE BURRS & SHARP EDGES. DIMENSIONS APPLY AFTER PLATING		PRINTED MOTOR WORKS Ltd, ALTON, HAMPSHIRE. GU34 2QW. UK	
ISS.	DATE	CR No.	ZONE	INITIALS	DRAWN BY	DATE	0. ± 0.4	ESTIMATED MASS 701.84	SCALE 1:1	MATERIAL N/A	FINISH N/A	TITLE CUSTOMER OUTLINE DRG. GPM9		
21	29/02/2012	CR3926		GB	G. BELL	14/09/2009	0.0 ± 0.1							
20	11/10/2011	CR3815		GB	CHECKED BY	DATE	0.00 ± 0.05					DO NOT SCALE. IF IN DOUBT ASK. BS 8888		
19	11/08/2010	CR3439		GB	RB	10.09.09	ANGULAR ± 0.5°							DRAWING NUMBER 000395
18	14/04/2010	CR3386		GB	APPROVED BY	DATE	SURFACE FINISH 1.6/ ∇							

© PRINTED MOTOR WORKS LIMITED
 THIS DRAWING, ENGINEERING REPORT OR DOCUMENT IS COPYRIGHT AND PROPERTY IS RESERVED THEREIN AND THE INFORMATION CONTAINED THEREIN IS CONFIDENTIAL. THIS DRAWING, ENGINEERING REPORT OR DOCUMENT AND INFORMATION MAY NOT BE REPRODUCED OR COMMUNICATED TO A THIRD PARTY OR USED FOR ANY PURPOSE OTHER THAN THAT FOR WHICH IS SUPPLIED WITHOUT THE PRIOR WRITTEN CONSENT OF THE COMPANY.