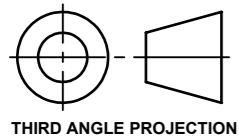
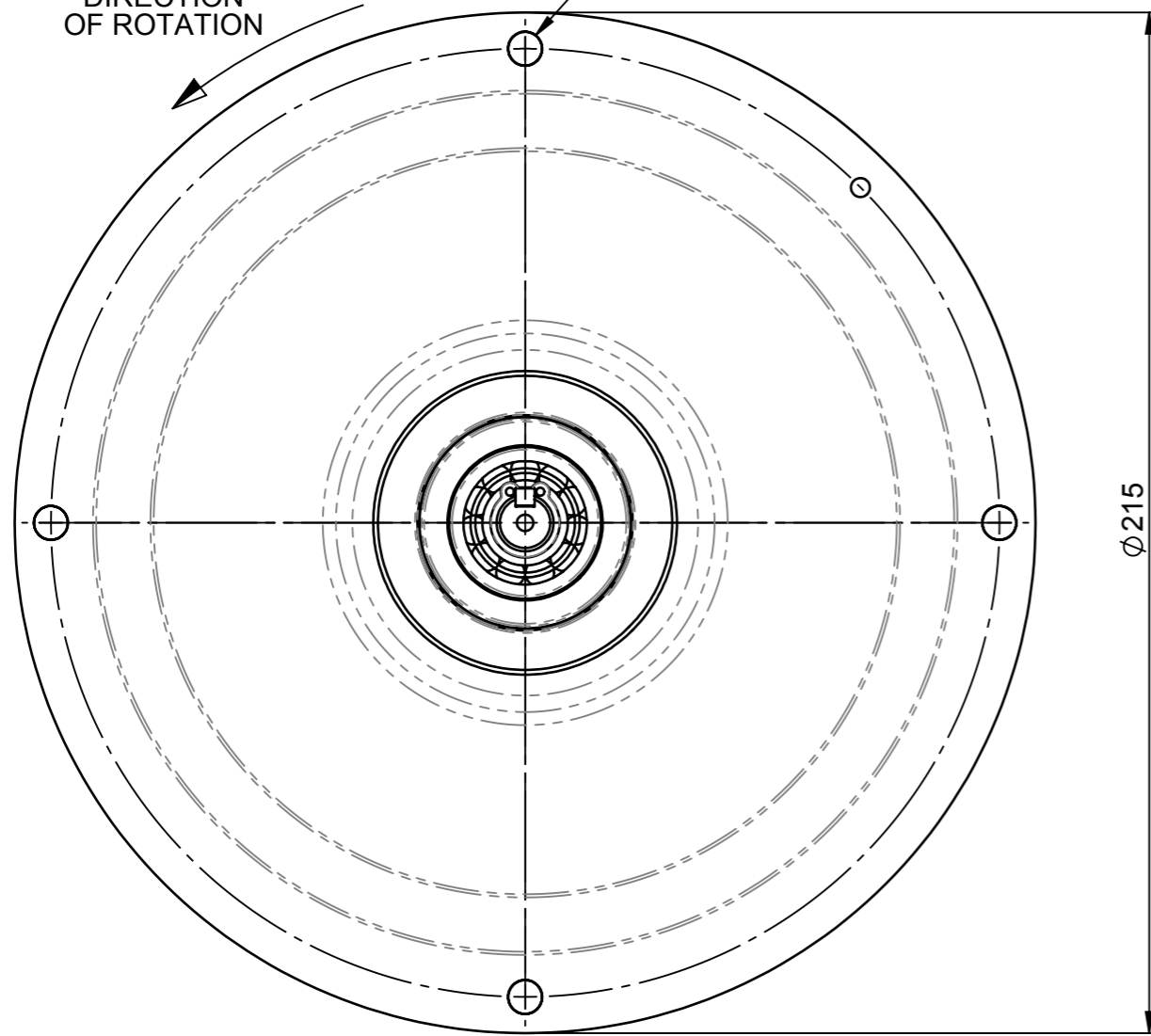


© PRINTED MOTOR WORKS LIMITED
 THIS DRAWING, ENGINEERING REPORT OR DOCUMENT IS COPYRIGHT AND PROPERTY IS RESERVED THEREIN AND THE INFORMATION CONTAINED THEREIN IS CONFIDENTIAL. THIS DRAWING, ENGINEERING REPORT OR DOCUMENT AND INFORMATION MAY NOT BE REPRODUCED OR COMMUNICATED TO A THIRD PARTY OR USED FOR ANY PURPOSE OTHER THAN THAT FOR WHICH IS SUPPLIED WITHOUT THE PRIOR WRITTEN CONSENT OF THE COMPANY.

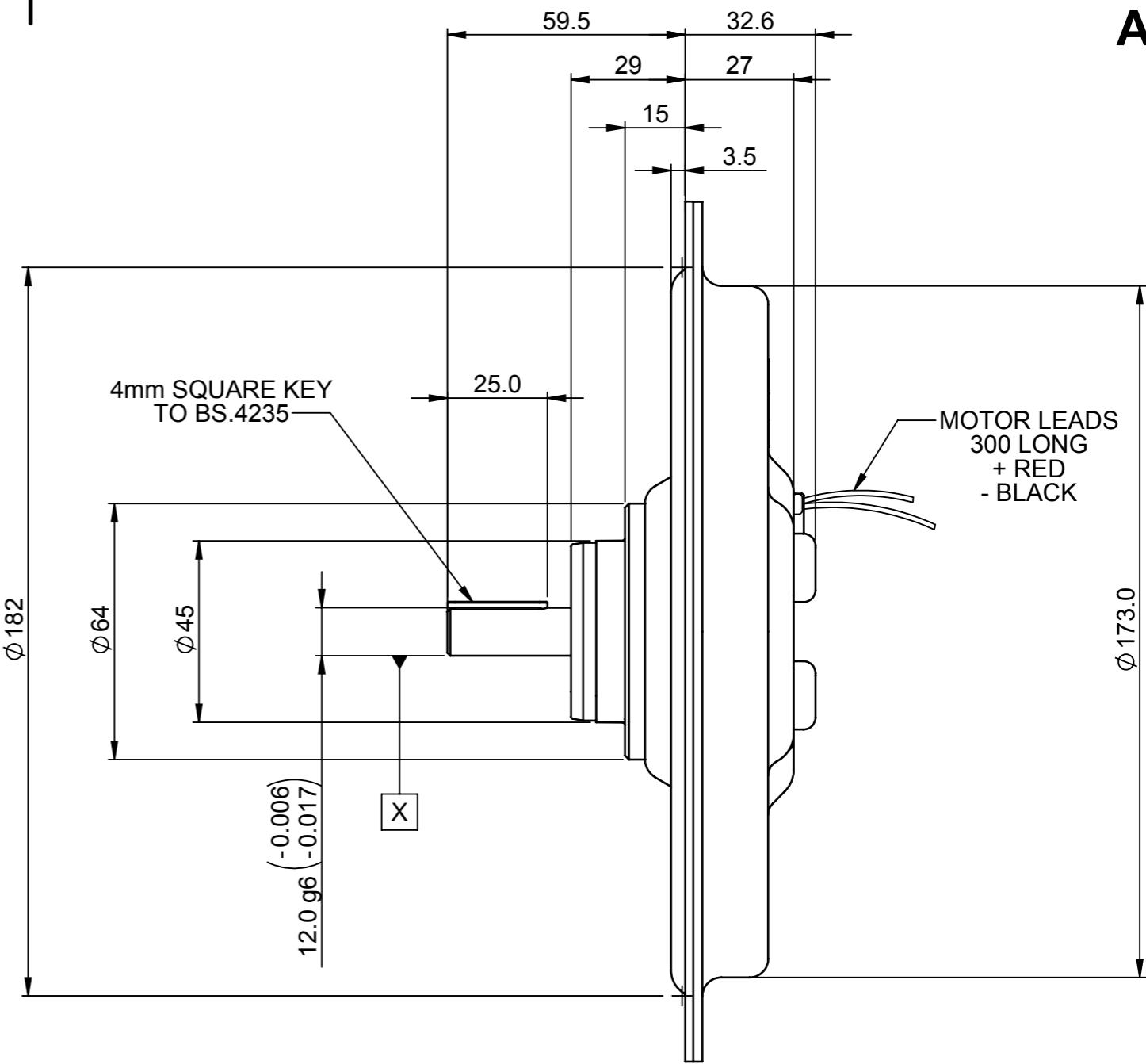


4 HOLES $\phi 7.2$ THRO'
 EQUISPACED
 AS SHOWN ON 199.9 PCD
 $\phi \phi 0.1 X$

DIRECTION OF ROTATION



A3



MOTOR RATINGS.

VOLTAGE.....43.3 Vdc
 CURRENT.....9.3 Amps
 TORQUE.....96 Ncm
 SPEED.....3000 r.p.m
 POWER.....300 Watts

MOTOR CONSTANTS.

VOLTAGE.....Ke 11.8 V/1000 r.p.m
 TORQUE.....Kt 11.2 Ncm/ Amp
 DAMPING.....Kd 0.99 Ncm / 1000 r.p.m
 FRICTION.....Tf 4.9 Ncm
 TERMINAL RESISTANCE.....0.85 Ohm

NOTES:

1. BEARING COVER 461368 IS AVAILABLE AS AN OPTIONAL EXTRA.
2. MAX. SHAFT ENDFLOAT 0.125
3. ELECTRICAL SPEC. No. 006

GENERAL ASSEMBLY DETAILS
 SEE DRG. 539596

LAST CHANGE DETAIL \triangle					KEY CHARACTERISTICS IDENTIFIED BY THE FOLLOWING SYMBOL \oplus		TOLERANCES UNLESS STATED		DIMENSIONS mm		UNLESS OTHERWISE STATED CHAMFER OR RADII 0.13 (0.005") MAX. REMOVE BURRS & SHARP EDGES. DIMENSIONS APPLY AFTER PLATING		PRINTED MOTOR WORKS Ltd, ALTON, HAMPSHIRE. GU34 2QW. UK		
ISS.	DATE	CR No.	ZONE	INITIALS	DRAWN BY	DATE	0. ± 0.4	ESTIMATED MASS 2117.18	SCALE 1:1.5	MATERIAL N/A	FINISH N/A	TITLE CUSTOMER OUTLINE DRG. GPM16			
10	26/07/2010	CR3424		GB	G. BELL	21/09/2009	0.0 ± 0.1					DO NOT SCALE. IF IN DOUBT ASK. BS 8888	DRAWING NUMBER 000340	SHEET 1 OF 1	
09	15/04/2010	CR3392		GB	CHECKED BY RB	21/09/2009	0.00 ± 0.05								
08	21/09/2009	CR3269		GB	APPROVED BY	DATE	ANGULAR ± 0.5°	SURFACE FINISH 1.6/ ∇							