

4 3 2 1

NOTES (UNLESS OTHERWISE SPECIFIED)

1. ALL DIMENSIONS APPLY AFTER PLATING.
2. BREAK ALL SHARP EDGES AND REMOVE BURRS.
- 3 ALL DIMENSIONS ARE IN mm UNLESS OTHERWISE NOTED.
4. LINEAR STROKE: 50 +1/-0mm
5. PEAK FORCE: AVG. 45N (48V@1.6A)
6. FORCE CONSTANT: AVG. 30N/A@48V
7. COIL RESISTANCE: 29-30 ohm
8. INDUCTANCE: 20.45 mH
9. ENCODER RESOLUTION: 5,1,um
10. ENCODER REPEATABILITY: ± 4 ENC. COUNTS
11. MOVING MASS: 0.335kg
12. TOTAL MASS: 2.575kg
13. OPERATING TEMPERATURE: 0°C TO 65°C

DB 26P PINOUT

PIN	FUNCTION
1	(AXIS 1) PH. A+
2	(AXIS 1) PH. B+
3	(AXIS 1) PH. Z+
4	NC
5	NC
6	I/O RTN
7	NC
8	NC
9	NC
10	(AXIS 1) PH. A-
11	(AXIS 1) PH. B-
12	(AXIS 1) PH. Z-
13	NC
14	NC
15	NC
16	NC
17	NC
18	NC
19	+5VDC
20	5V RTN
21	(AXIS 1) COIL +
22	(AXIS 1) COIL +
23	(AXIS 1) COIL -
24	(AXIS 1) COIL -
25	NC
26	NC

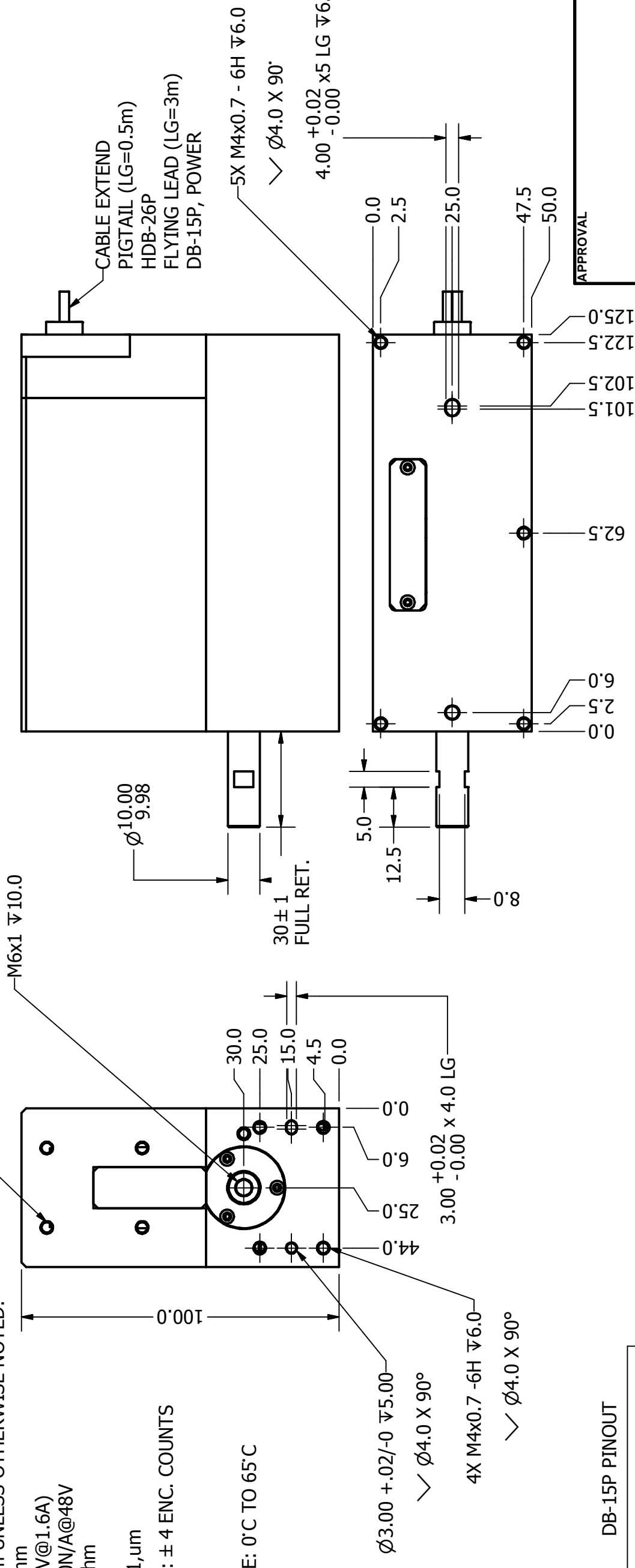
DB-15P PINOUT

PIN	FUNCTION
1	PH. A+
2	PH. Z+
3	PH. B+
4	+5V
5	NC
6	NC
7	NC
8	NC
9	PH. A-
10	PH. Z-
11	PH. B-
12	5V RTN
13	5V RTN
14	NC
15	NC

POWER

No	DETAIL
1	V RTN
2	+ V
3	COIL +
4	COIL -

THESE FOUR HOLES OPTIONAL BY MOD ONLY



SIGNATURE NEEDED FOR ORDER APPROVAL  
 SIGN: \_\_\_\_\_ DATE: \_\_\_\_\_  
 APPROVAL NOT RECEIVED WITHIN  
 48 HOURS MAY AFFECT DELIVERY

**SMAC**

DESIGNED BY: MARK C DATE: 12/16/2010 CHECKED BY: DATE: CONTRACT:  
 DRAWN BY: MARK C DATE: 12/21/2010 APPROVED BY: DATE:  
 MACHINE FINISH: 3.2/∇ PART NAME: LCA50-050-7 SHEET NUMBER: 1 OF 1  
 EXCEPT NOTED PROTECTIVE FINISH: SCALE: B DWG SIZE: LCA 50-050-7 REVISION: C  
 FILE NAME: LCA 50-050-7\_C.idw SPEC. NUMBER: DO NOT SCALE DWG

B A

B A