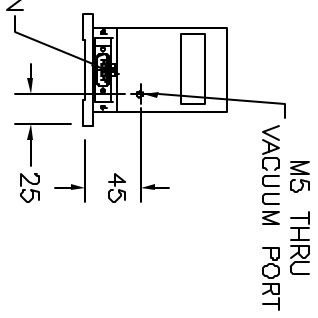
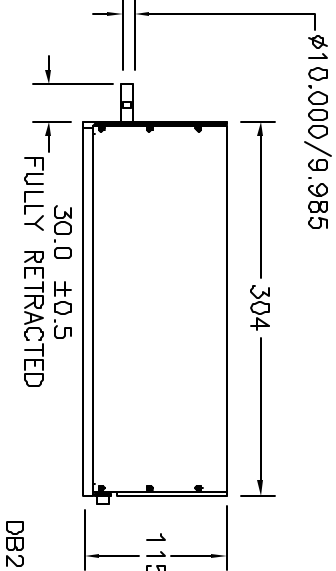
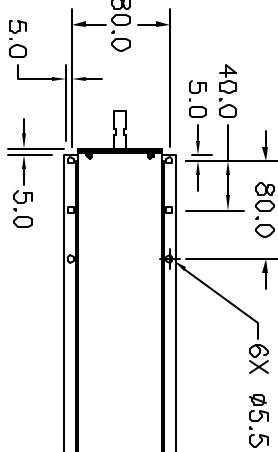
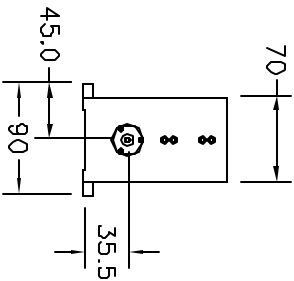


NOTES: (UNLESS OTHERWISE SPECIFIED)

- ALL DIMENSIONS ARE IN MILLIMETERS
- LINEAR SPECIFICATION:  
 LINEAR STROKE: 15 +1/-0 mm  
 FORCE CONSTANT: 53 N/AMP  
 PEAK FORCE: 84N @ 1.7 AMPS (48 VDC)  
 CONTINUOUS FORCE: 53 N @ 1 AMP (48 VDC)  
 COIL DC RESISTANCE: 28.5 OHMS @ 22°C  
 ENCODER RESOLUTION: 0.5, 1 AND 5 Microns  
 ENCODER ACCURACY: ±4 Counts
- THETA SPECIFICATION:  
 ROTATION ANGLE: 360°  
 PEAK TORQUE: TBD Nm (X Amps, XX VDC)  
 CONTINUOUS TORQUE: 1Nm @ 2.3 AMPS (48 DCV)  
 MAXIMUM RPM: 80 (WITH 0 LOAD & VACUUM)  
 GEAR RATIO: 72.3:1  
 ROTARY MOTOR TYPE: 48V BRUSH  
 ENCODER RESOLUTION: 2000 CPR  
 ENCODER ACCURACY: ± 5 COUNTS (ZERO BACK LASH)
- MOVING MASS: 916 GRAMS
- TOTAL MASS: 3086 GRAMS
- OPERATING TEMPERATURE: -10°C TO +65°C

DB-25P PINOUT

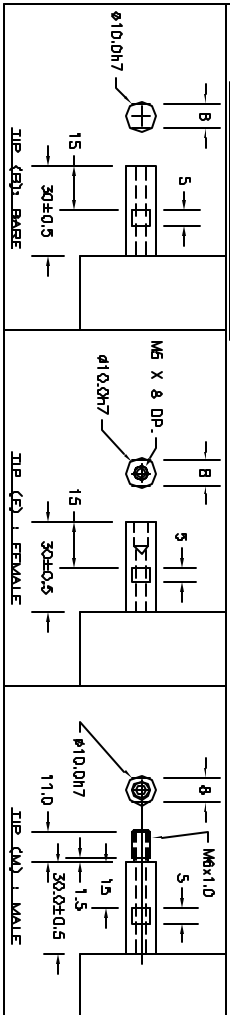
1	+5VDC
2	+5V RETURN
3	ROTARY MOTOR
4	LINEAR PHASE A-
5	NC
6	NC
7	GND +
8	GND +
9	LINEAR PHASE B-
10	ROTARY MOTOR+
11	LINEAR PHASE A-
12	LINEAR PHASE B-
13	LINEAR PHASE A+
14	LINEAR PHASE B+
15	LINEAR PHASE A-
16	LINEAR PHASE B-
17	LINEAR INDEX +
18	COIL -
19	COIL -
20	COIL -
21	ROTARY PHASE A-
22	ROTARY PHASE INDEX
23	LINEAR INDEX -
24	ROTARY FINE INDEX
25	ROTARY FINE INDEX



SIGNATURE NEEDED FOR ORDER APPROVAL  
 SIGN \_\_\_\_\_ DATE \_\_\_\_\_  
 APPROVAL NOT RECEIVED WITHIN  
 48 HOURS MAY AFFECT DELIVERY

REV	DATE	ECN	DESCRIPTION	APP
A	5-12-03	2889	INITIAL RELEASE	BR
B	1/28/04	3041	UPDATE SHAFT END DIM.	SEK
C	3/19/04	3113	ADD FRONT LIMIT	SMH
D	2/16/05	3485	SEE ECN	CMW

REVISIONS



TOLERANCES ARE:	MAX	MIN
X	± 0.50	± 0.1
XX	± 0.05	± 0.05
XXX	± 0.1*	± 0.1*
ANGULARITY	± 0.01	± 0.01
CONCENTRICITY	± 0.05	± 0.05
ROUNDNESS	± 0.02 MAX	± 0.02 MAX
EDGE BREAK	0.03 MAX	0.03 MAX
CHAMFER		

MATERIAL:	HEAT TREAT:	FINISH:	PROTECTIVE FINISH:
	PC	DEEP	3.2/

DESIGNED BY:	DATE:	CHECKED BY:	DATE:
RENDER	5-28-03	APPROVED BY:	DATE:

SCALE: 4/1  
 DWG SIZE: B  
 PART NUMBER: LAR95-015-7  
 SHEET NUMBER: 1 of 1

SMAC

REF. NUMBER: LAR95-015

