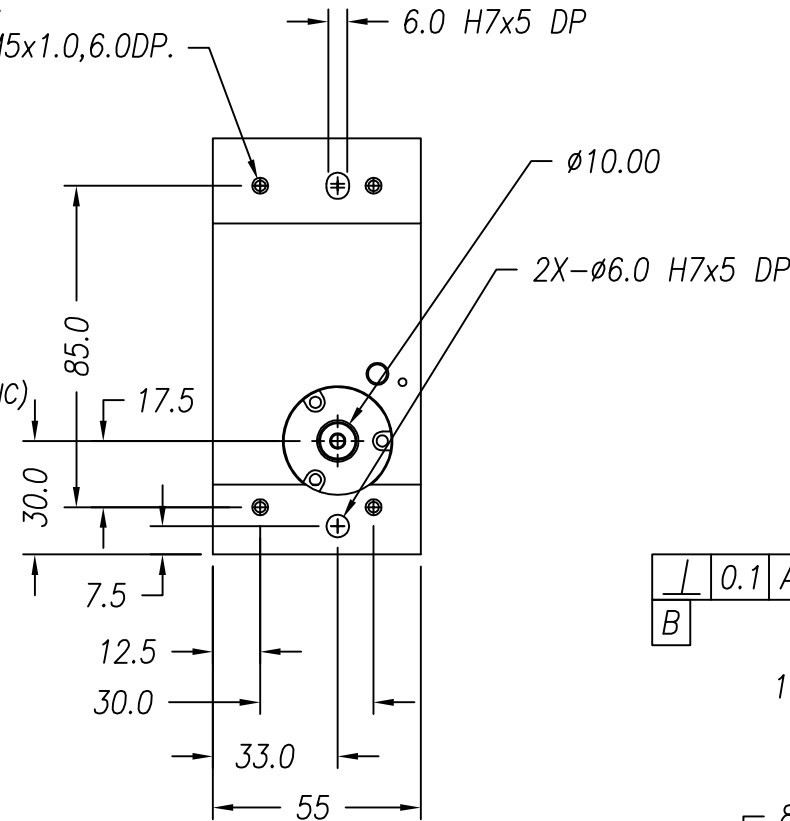


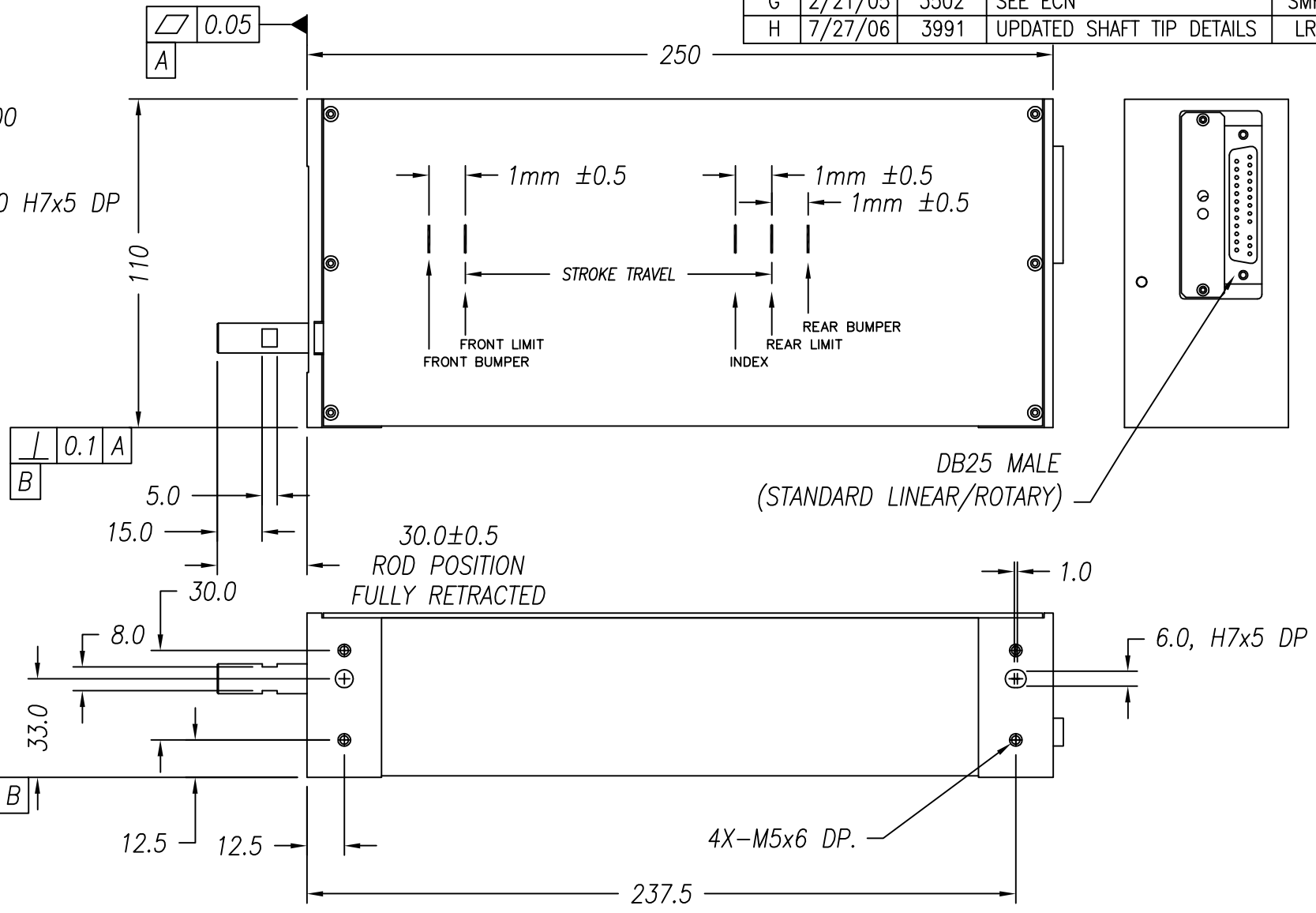
NOTES: (UNLESS OTHERWISE SPECIFIED)

- ALL DIMENSIONS ARE IN MM UNLESS OTHERWISE NOTED.
- ALL DIMENSIONS APPLY AFTER PLATING.
- ACTUATOR SPECIFICATIONS:
 - LINEAR STROKE: 50.0 MM
 - FORCE CONSTANT: 2.4 KGRAM/AMP
 - PEAK FORCE: 3.8 KGRAMS @1.6 AMPS (24 VDC)
 - COIL DC RESISTANCE: 16 OHMS @ 22°C
 - COIL INDUCTANCE: TBD mH @ 1KHz
 - MAXIMUM POWER DISSIPATE TO COIL: 32 WATTS
 - LINEAR ENCODER RESOLUTION: 5 MICRON-METER (NC)
 - ENCODER ACCURACY: ±20 MICRON-METER
 - MOVING MASS: 500 GRAMS
 - TOTAL MASS: 3150 GRAMS
 - ROTARY ANGLE: 360° FULL CIRCLE
 - STALL TORQUE: 130mN
 - TORQUE CONSTANT: 30mN/A (24 VDC)
 - CONTINUOUS TORQUE: 30mN/A
 - COIL DC RESISTANCE: 21 OHMS
 - GEAR RATIO: NONE (DIRECT DRIVE)
 - THETA ENCODER RESOLUTION: 2000 COUNT/ REV
 - MAX. OUTPUT SPEED: 4500 RPM (NO LOAD)
- OPERATING TEMPERATURE: -10°C TO +65°C

4X-M5x1.0,6.0DP.



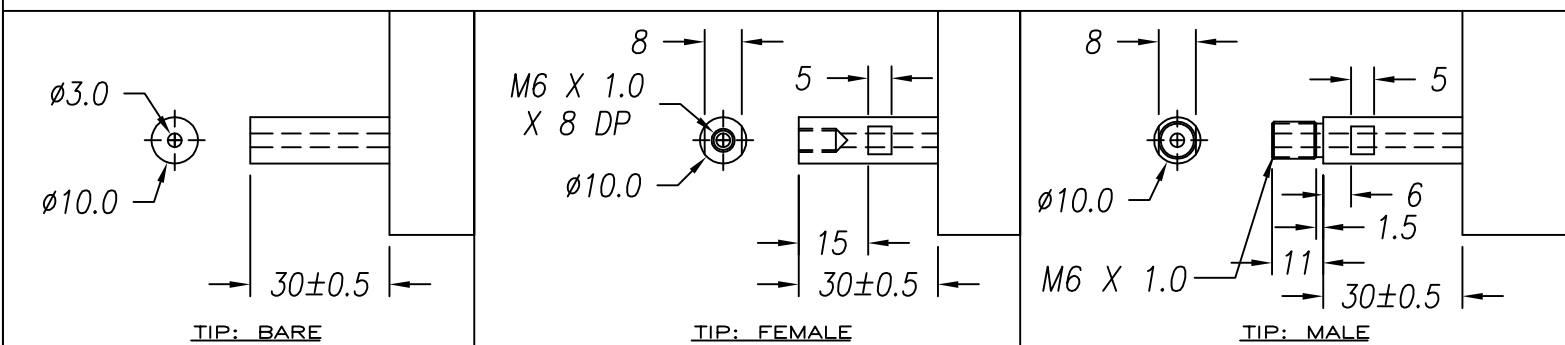
REVISIONS				
REV	DATE	ECN	DESCRIPTION	APP
G	2/21/05	3502	SEE ECN	SMH
H	7/27/06	3991	UPDATED SHAFT TIP DETAILS	LR



DB-25P PINOUT

1	+5VDC	14	LINEAR PHASE A+
2	+5V RETURN	15	ROTARY PHASE A+
3	ROTARY MOTOR-	16	LINEAR PHASE B+
4	LINEAR PHASE A-	17	ROTARY PHASE B+
5	NC	18	LINEAR INDEX +
6	TBD	19	COIL -
7	COIL +	20	COIL -
8	COIL +	21	ROTARY PHASE A-
9	LINEAR PHASE B-	22	ROTARY COARSE INDEX
10	ROTARY MOTOR+	23	LINEAR INDEX -
11	LIMIT + (TBD)	24	ROTARY FINE INDEX
12	LIMIT - (TBD)	25	ROTARY FINE INDEX
13	ROTARY PHASE B-		

SIGNATURE NEEDED FOR ORDER APPROVAL
 SIGN _____ DATE _____
 APPROVAL NOT RECEIVED WITHIN
 48 HOURS MAY AFFECT DELIVERY



TOLERANCES ARE: X. ± 0.50 X.X ± 0.1 X.XX ± 0.05 X.XXX ± 0.01 ANGULARITY ± 0.1° CONCENTRIC ± 0.01 ROUNDNESS ± 0.05 EDGE BREAK 0.2 MAX CHAMFER 0.1 MAX	MATERIAL: ALUMINUM 6061-T6	SMAC DESIGNED BY: TOAN VU DATE: 02/05/01 CHECKED BY: DRAWN BY: L. RAKOW DATE: 7/27/06 APPROVED BY:		REF. NUMBER LAR55-050-5
	HEAT TREAT: RC DEEP			DATE: CONTRACT: STD
	MACHINE FINISH: 1.6	PART NAME: LAR55-050-5		SHEET NUMBER: 1 OF 1
	EXCEPT NOTED. PROTECTIVE FINISH ELECTROLESS NICKEL SPEC. NUMBER:	SCALE: NONE DO NOT SCALE DWG	DWG SIZE: B	PART NUMBER: LAR55-050-5