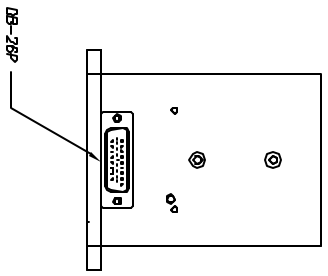
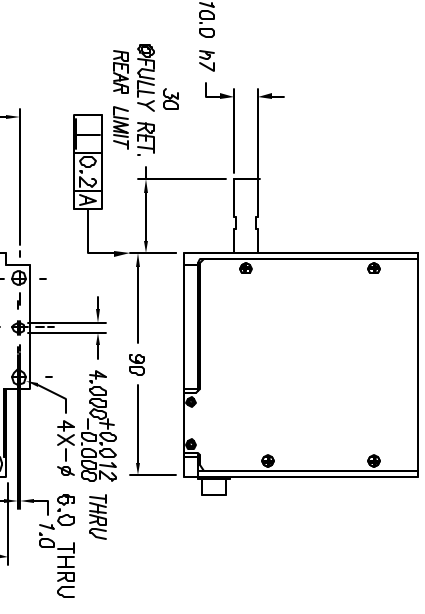
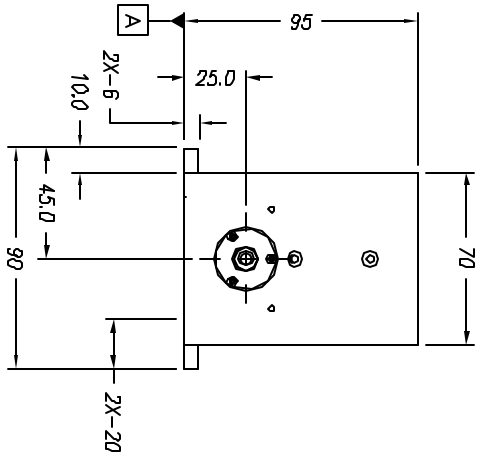


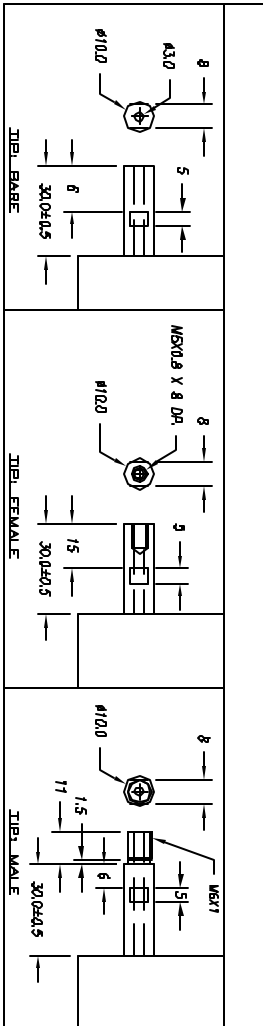
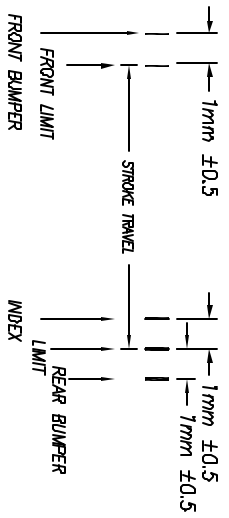
NOTES: (UNLESS OTHERWISE SPECIFIED)

1. ALL DIMENSIONS ARE IN MILLIMETERS.
2. LINEAR SPECIFICATION:
 LINEAR STROKE: 15+1.0/-0 mm
 FORCE CONSTANT: 53 N/AMP
 PEAK FORCE: 84 N @ 1.7 AMPS (48VDC)
 CONTINUOUS FORCE: 41.5 N @ 1 AMP (48 VDC)
 COIL DC RESISTANCE: 26.5 OHMS @ 27°C
 COIL INDUCTANCE: 10.8 mH @ 1 kHz
 ENCODER RESOLUTION: 0.5, 1.0 OR 5 MICROMETERS
 ENCODER ACCURACY: ± 4 COUNTS
3. MOVING MASS: 310 GRAMS
4. TOTAL MASS: 2200 GRAMS
5. OPERATING TEMPERATURE: -10°C TO +65°C



DB-28P PINS

1	PH. A+
2	PH. B+
3	PH. Z+
4	PH. Z+
5	NC
6	1/2" PIN
7	RET. PH. B+
8	RET. PH. A+
9	RET. PH. A+
10	PH. A-
11	PH. B-
12	PH. Z-
13	NC/RET. HOME
14	LIMIT +
15	RET. PH. B-
16	RET. PH. A-
17	RET. PH. A-
18	1/2" PIN
19	1/2" PIN
20	SV PIN
21	PH. A+
22	PH. B+
23	PH. Z+
24	PH. Z+
25	PH. A-
26	PH. B-
27	PH. Z-
28	PH. Z-



SIGNATURE NEEDED FOR ORDER APPROVAL
 DATE _____
 APPROVAL NOT RECEIVED WITHIN
 48 HOURS MAY AFFECT DELIVERY

REVISIONS

REV	DATE	ECN	DESCRIPTION	APP
D	4/4/03	2744	UPDATE FORMAT	BR
E	1/28/04	3041	UPDATE SHAFT END DIM.	SEK
F	3/19/04	3113	SEL. ECN	SMH
G	4/14/05	3568	CORRECT MALE TIP DIM	SMH

TOLERANCES ARE: % ± 0.50 XX ± 0.1 XXX ± 0.05 XXXX ± 0.1* ANGULARITY ± 0.01 CONCENTRICITY ± 0.05 ROUNDNESS ± 0.2 MAX EDGE BREAK 0.2 MAX CHAMFER		MATERIAL: ALUMINUM HEAT TREAT: RC MACHINE FINISH: DEEP EXPERT AUTO: 1.8 PROTECTIVE FINISH: ELECTROLESS NICKEL SPEC. NUMBER:	DESIGNED BY: CAN VII DATE: 08/05/02 CHECKED BY: APPROVED BY: DATE: DRAWN BY: HOOMANI DATE: 01/04/03 PART NUMBER: LAL95-015-7	REF. NUMBER: LAL95-015
FILE NAME: LAL95-015-7	SCALE: NONE DO NOT SCALE DIMS	DWG. SIZE: B	PART NUMBER: LAL95-015-7	SHEET NUMBER: 1 OF 1 REVISION: G

SMAC