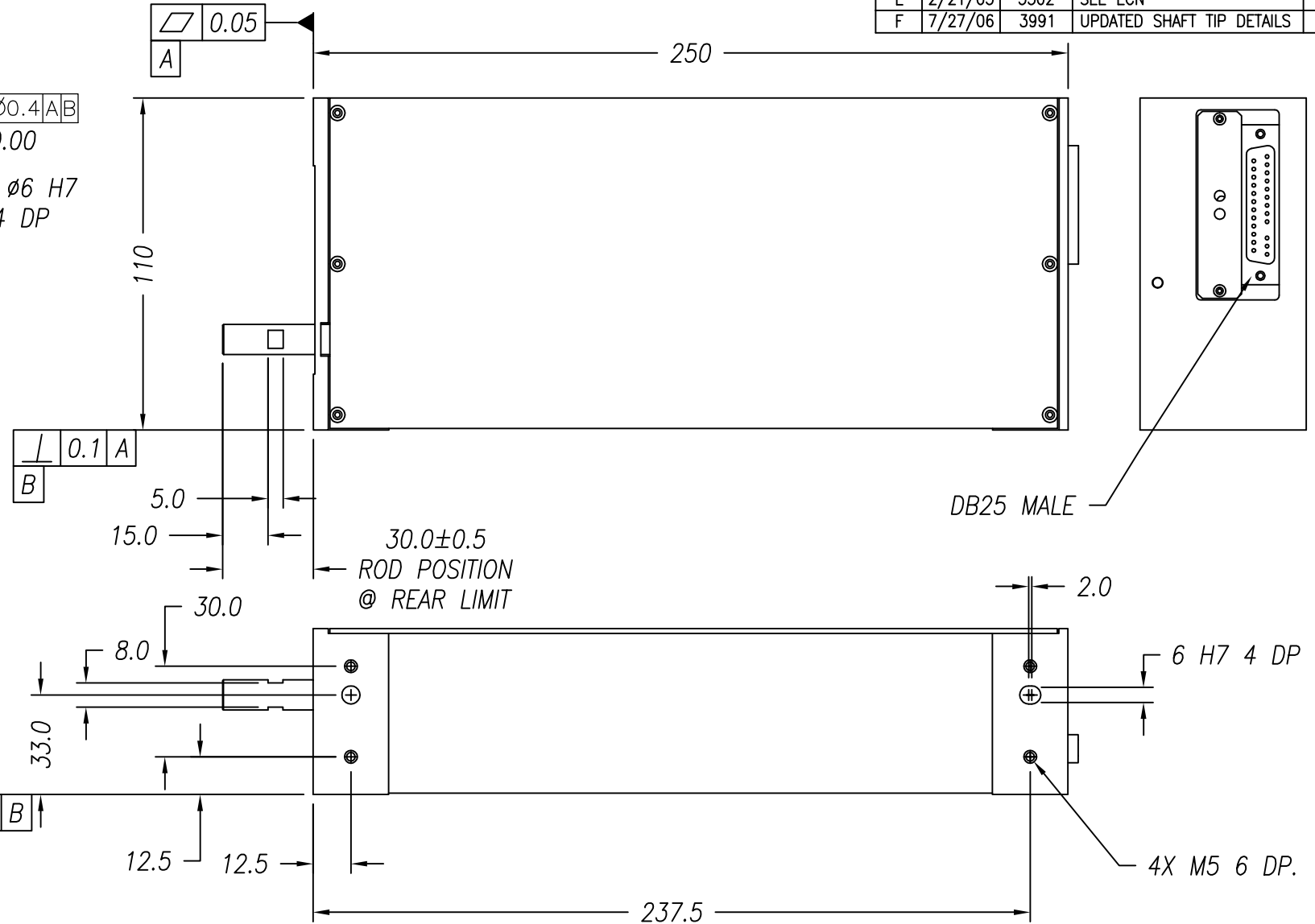
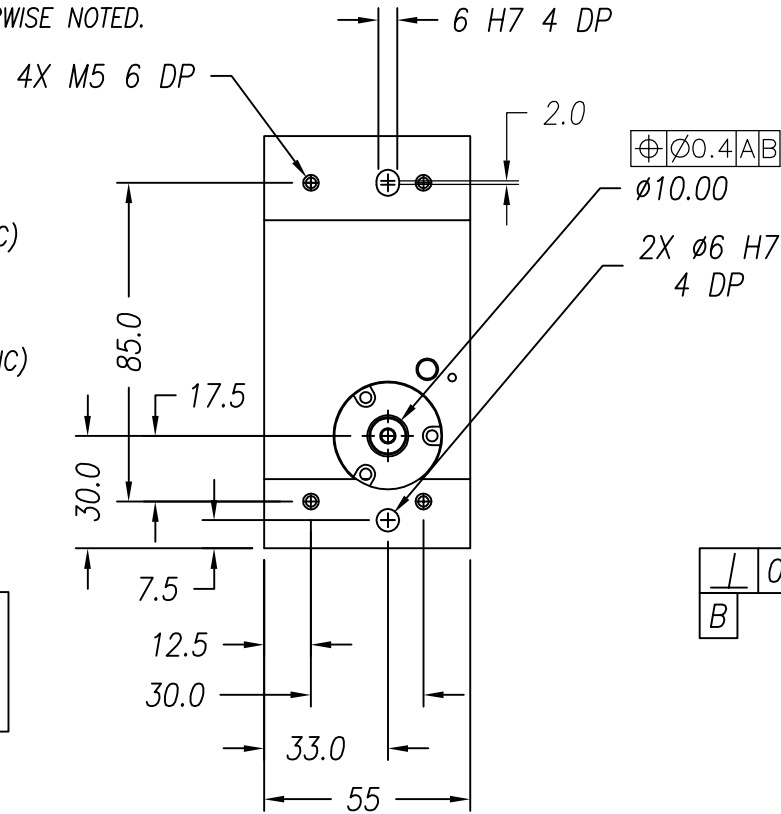


NOTES: (UNLESS OTHERWISE SPECIFIED)

- ALL DIMENSIONS ARE IN MILLIMETER UNLESS OTHERWISE NOTED.
- LINEAR SPECIFICATION:**
 LINEAR STROKE: 100.0 +1.0/-0 mm
 FORCE CONSTANT: 17.0 N/AMP
 PEAK FORCE: 25.0 N @ 1.8 AMPS (48 VDC)
 CONTINUOUS FORCE: 17.0 N @ 1.0 AMPS (48 VDC)
 COIL DC RESISTANCE: 25 OHMS @ 22°C
 COIL INDUCTANCE: 6.8 mH @ 1 kHz
 ENCODER RESOLUTION: 0.5, 1, 5 MICROMETER (NC)
 ENCODER ACCURACY: ±4 Counts
- MOVING MASS: 300 GRAMS
- TOTAL MASS: 3800 GRAMS
- OPERATING TEMPERATURE: -10°C TO +65°C

SIGNATURE NEEDED FOR ORDER APPROVAL
 SIGN _____ DATE _____
 APPROVAL NOT RECEIVED WITHIN
 48 HOURS MAY AFFECT DELIVERY

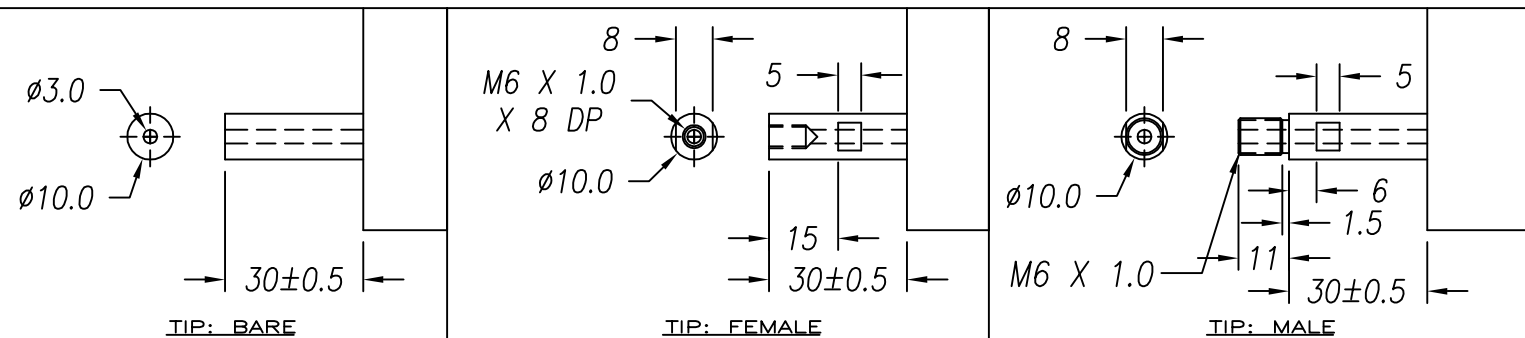
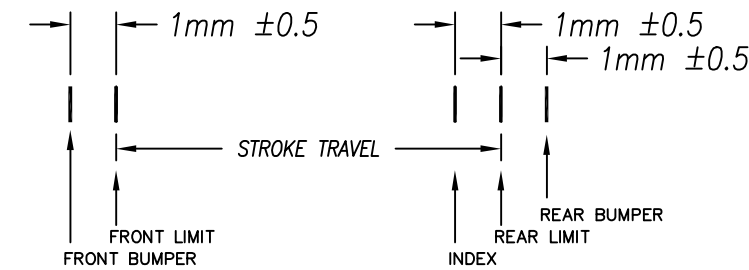
REVISIONS				
REV	DATE	ECN	DESCRIPTION	APP
E	2/21/05	3502	SEE ECN	SMH
F	7/27/06	3991	UPDATED SHAFT TIP DETAILS	LR



DB25 MALE

DB-25P PINOUT

1	+5VDC	14	LINEAR PHASE A+
2	+5V RETURN	15	NO CONNECTION
3	NO CONNECTION	16	LINEAR PHASE B+
4	LINEAR PHASE A-	17	NO CONNECTION
5	NC	18	LINEAR INDEX +
6	LIMIT RETURN	19	COIL -
7	COIL +	20	COIL -
8	COIL +	21	NO CONNECTION
9	LINEAR PHASE B-	22	NO CONNECTION
10	NO CONNECTION	23	LINEAR INDEX -
11	LIMIT +	24	NO CONNECTION
12	LIMIT -	25	NO CONNECTION
13	NO CONNECTION		



TOLERANCES ARE: X. ± 0.50 X.X ± 0.1 X.XX ± 0.05 X.XXX ± ANGULARITY ± 0.1° CONCENTRIC ± 0.01 ROUNDNESS ± 0.05 EDGE BREAK 0.2 MAX CHAMFER 0.2 MAX	MATERIAL: ALUMINUM 6061-T6	SMAC		REF. NUMBER	
	HEAT TREAT: _____ / _____ RC _____ DEEP	DESIGNED BY: TOAN VU	DATE: 09/09/02	CHECKED BY:	DATE:
MACHINE FINISH: 1.6 ✓	EXCEPT NOTED. PROTECTIVE FINISH ELECTROLESS NICKEL	DRAWN BY: L. RAKOW	DATE: 7/27/06	APPROVED BY:	SHEET NUMBER: 1 OF 1
FILE NAME: LAL55-100-7_F	SPEC. NUMBER:	PART NAME: LAL55-100-7	SCALE: NONE	DWG SIZE: B	PART NUMBER: LAL55-100-7
		DO NOT SCALE DWG			REVISION: F