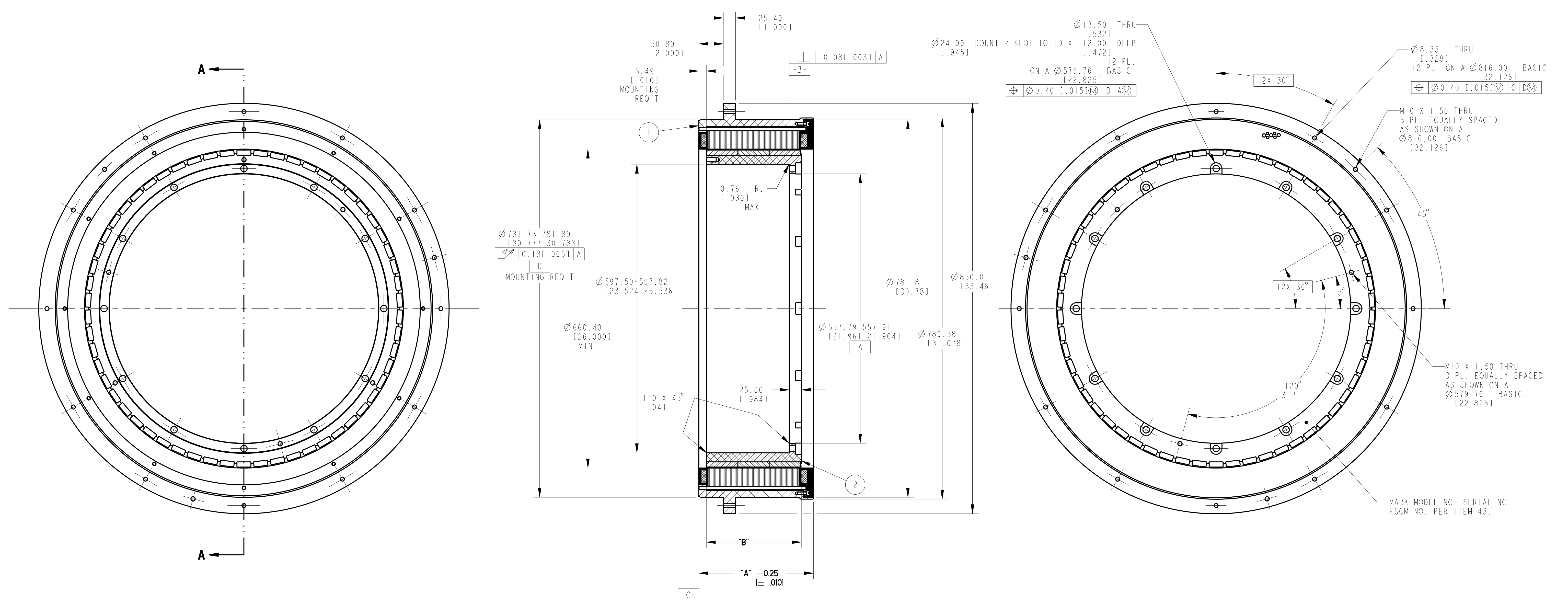


REVISION				
REV	ECN NO.	DESCRIPTION	DATE	APPROVED
A	R01-13452	SEE ECO	HLW	3-04-2010 TKB
B	R01-16197	SEE ECO	ALM	5/28/14 MLR

- NOTES:
- FOR A C.C.W. ROTATION, AS VIEWED FROM LEAD END, ENERGIZE PER EXCITATION SEQUENCE BELOW.
 - MOTOR SUPPLIED AS TWO SEPARATE COMPONENTS, ARMATURE ASSEMBLY, AND FIELD ASSEMBLY.
 - DIMENSIONS IN BRACKETS [] ARE ENGLISH UNITS FOR REFERENCE ONLY.
 - HIGH STRENGTH ALLOY STEEL BOLTS MUST BE USED FOR MOUNTING. (METRIC CLASS 12.9, ASTM GRADE A574)
 - RoHS (DIRECTIVE 2002/95/EC AND AMENDMENTS) COMPLIANCE REQUIRED.

MOTOR LEADS:
 #10 AWG, TEFLON INSULATED, U.L.1199
 3 LEADS, 900 mm [35"] MIN
 1- BLUE 1- BROWN 1- VIOLET

THERMISTOR LEADS:
 #26 AWG, TEFLON INSULATED
 4 LEADS, 900 mm [35"] MIN
 2- BLUE 2- RED



SECTION A-A

STEP	POWER CONNECTION		
	PHASE "U" BLUE	PHASE "V" BROWN	PHASE "W" VIOLET
1	(+)	(-)	
2	(+)		(-)
3		(+)	(-)
4	(-)	(+)	
5	(-)		(+)
6		(-)	(+)

EXCITATION SEQUENCE TABLE

TABLE 1				
MODEL NUMBER	ARMATURE & HOUSING ASSEMBLY	FIELD ASSEMBLY	DIM "A"	DIM "B"
KBM-260X01	947663/01X	947668/01	172.62 [6.796062992126]	132.08 [5.200]
KBM-260X02	947663/02X	947668/02	237.39 [9.346062992126]	196.85 [7.750]
KBM-260X03	947663/03X	947668/03	302.16 [11.896062992126]	261.62 [10.300]

THIS DOCUMENT IS ONLY FOR USE BY THE INTENDED RECIPIENT AND CONTAINS KOLLMORGEN CONFIDENTIAL INFORMATION

Pro/E Instance Name: KBM260X01.X947670
 Pro/E Drawing Name: 947670
 Pro/E Model Type: ASSEM
 Pro/Engineer Drawing

METRIC DRAWING

UNLESS OTHERWISE SPECIFIED:
 REMOVE ALL SHARP BURRS AND BREAK ALL SHARP EDGES
 X DECIMAL PLACES ±.4 [0.015]
 XX DECIMAL PLACES ±.13 [0.005]
 ANGULAR DIMENSIONS ±1°

DO NOT SCALE DRAWING. USE DIMENSIONS ONLY
 ALL DIMENSIONS ARE IN MILLIMETERS
 DIMENSIONS IN BRACKETS [] ARE IN INCHES
 AND ARE FOR REFERENCE ONLY
 INTERPRET GEOMETRIC SYMBOLS PER ANSI Y14.5M-1992

ITEM	QTY	IDENTIFYING NO.	DESCRIPTION
3	AR	IM-2709	MARKING PROCEDURE
2	I	SEE TABLE	FIELD ASSEMBLY
1	I	SEE TABLE	ARMATURE HOUSING ASSEMBLY

LIST OF PARTS

UNLESS OTHERWISE SPECIFIED:
 REMOVE ALL SHARP BURRS AND BREAK ALL SHARP EDGES
 X DECIMAL PLACES ±.4 [0.015]
 XX DECIMAL PLACES ±.13 [0.005]
 ANGULAR DIMENSIONS ±1°

DO NOT SCALE DRAWING. USE DIMENSIONS ONLY
 ALL DIMENSIONS ARE IN MILLIMETERS
 DIMENSIONS IN BRACKETS [] ARE IN INCHES
 AND ARE FOR REFERENCE ONLY
 INTERPRET GEOMETRIC SYMBOLS PER ANSI Y14.5M-1992

INLAND MOTOR
 501 FIRST STREET
 RADFORD, VIRGINIA 24141

OUTLINE AND ASSEMBLY
 KBM-260XXX-X00

FSCM 11384
 SIZE D
 DWG. NO. 947670
 REV B

SCALE: 0.250
 JOB NO.:
 SHEET 1 OF 1