

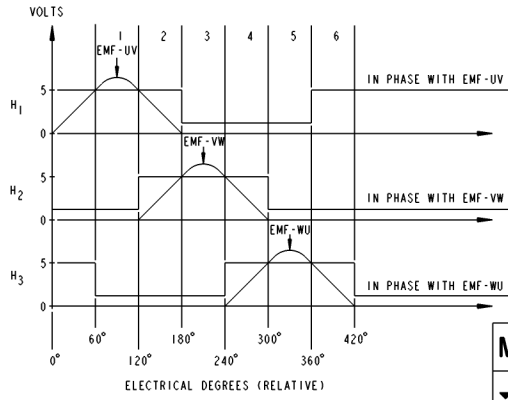
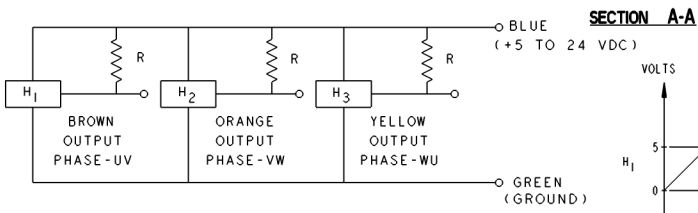
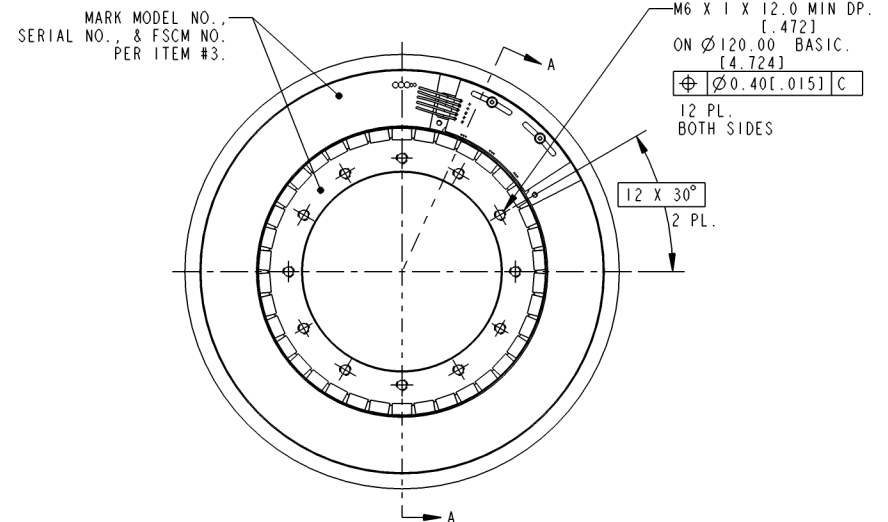
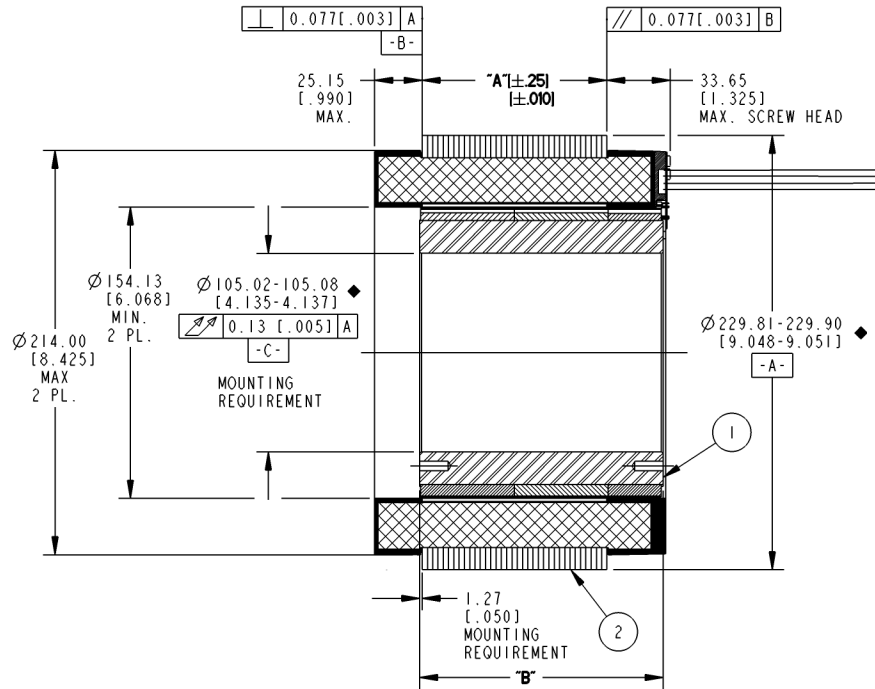
- NOTES:
- FOR A CCW ROTATION, AS VIEWED FROM LEAD END, ENERGIZE PER EXCITATION SEQUENCE BELOW.
 - MOTOR SUPPLIED AS TWO SEPARATE COMPONENTS, ARMATURE & SENSOR ASSEMBLY, AND FIELD ASSEMBLY.
 - R=1.5K OHMS APPROXIMATELY (CUSTOMER SUPPLIED).
 - EMF-UV, EMF-VW AND EMF-WU IS BACK EMF OF MOTOR PHASES UV, VW AND WU ALIGNED WITH SENSOR OUTPUT SHOWN FOR CCW ROTATION ONLY.
 - MINIMUM MOUNTING SURFACE FROM 220.98 [8.700] TO 229.87 [9.050] BOTH SIDES.
 - DIMENSIONS IN BRACKETS [] ARE ENGLISH UNITS FOR REFERENCE ONLY.
 - NO ANGULAR RELATIONSHIP BETWEEN MOUNTING HOLES ON EITHER SIDE OF ROTOR.
 - RoHS (DIRECTIVE 2002/95/EC AND AMMENDMENTS) COMPLIANCE REQUIRED.

MOTOR LEADS :
 #14 AWG, TEFLON INSULATED, U.L., 1199
 3 LEADS, 400 MM [15.75"] MIN
 1- BLUE 1- BROWN 1- VIOLET

THERMISTOR LEADS :
 #26 AWG, TEFLON INSULATED
 2 LEADS, 400 MM [15.75"] MIN
 1- BLUE 1- RED

SENSOR LEADS:
 #26 AWG, TEFLON COATED PER MIL-W-22759/11
 5 LEADS, 400 MM [15.75"] MIN
 1- BLUE 1- GREEN 1-BROWN 1-ORANGE 1-YELLOW

REVISION				
REV	ECN NO.	DESCRIPTION	DATE	APPROVED
A	R01.14426	SEE ECO L&T	10-May-11	LW



MODEL NUMBER	ARMATURE ASSY H.V. INSULATION	ARMATURE ASSY STD. INSULATION	FIELD ASSY	DIM "A"	DIM "B"
KBMS-60X00	946157/00X	946196/00X	946158/00	26.62 [1.048]	57.53 [2.265]
KBMS-60X01	946157/01X	946196/01X	946158/01	48.11 [1.894]	78.99 [3.110]
KBMS-60X02	946157/02X	946196/02X	946158/02	97.71 [3.847]	128.78 [5.070]
KBMS-60X03	946157/03X	946196/03X	946158/03	147.32 [5.800]	178.31 [7.020]

THIS DOCUMENT IS ONLY FOR USE BY THE INTENDED RECIPIENT AND CONTAINS KOLLMORGEN CONFIDENTIAL INFORMATION

Prof Instance Name: INHSH.MILLINE.946156
 Prof Drawing Name: 946156
 Prof Model Type: ASSEM
 Pro/Engineer Drawing

STEP	PHASE "U" BLUE	PHASE "V" BROWN	PHASE "W" VIOLET
1	+	-	-
2	+	-	-
3	-	+	-
4	-	+	-
5	-	-	+
6	-	-	+

EXCITATION SEQUENCE TABLE

SENSOR OUTPUT
 CCW VIEWED LEAD END

ITEM	QTY	IDENTIFYING NO.	DESCRIPTION
3	AR	IM-2709	MARKING PROCEDURE
2	I	SEE TABLE	ARMATURE ASSY
1	I	SEE TABLE	FIELD ASSEMBLY

LIST OF PARTS

KOLLMORGEN
Inland Motor

INLAND MOTOR
 501 FIRST STREET
 RADFORD, VIRGINIA 24141

OUTLINE
 KBMS-60XXX-X00

SCALE: 0.500 JOB NO.: SHEET 1 OF 1

REV A

METRIC DRAWING

SIGNIFICANT PRODUCT CHARACTERISTIC

CRITICAL PRODUCT CHARACTERISTIC

UNLESS OTHERWISE SPECIFIED:
 REMOVE ALL SHARP BURRS AND BREAK ALL SHARP EDGES
 X DECIMAL PLACES ± 4 [0.15]
 XX DECIMAL PLACES ± 13 [0.005]
 ANGULAR DIMENSIONS ± 1'

DO NOT SCALE DRAWING. USE DIMENSIONS ONLY. ALL DIMENSIONS ARE IN MILLIMETERS AND ARE FOR REFERENCE ONLY.

INTERPRET GEOMETRIC SYMBOLS PER ANSI Y14.5M-1992

DATE: 10-Jul-09
 DATE: 17-Sep-09
 DATE: 17-Sep-09

SCALE: 0.500 JOB NO.: SHEET 1 OF 1