

A

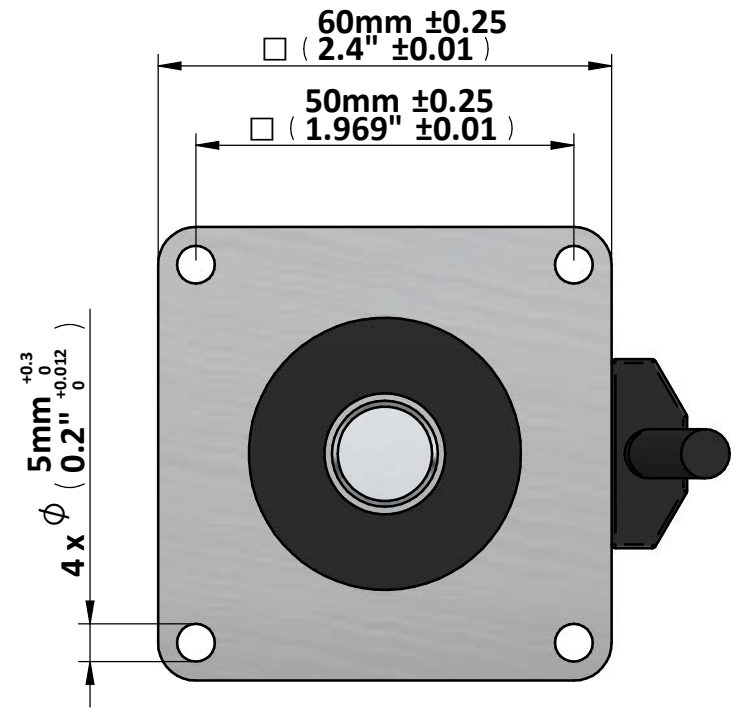
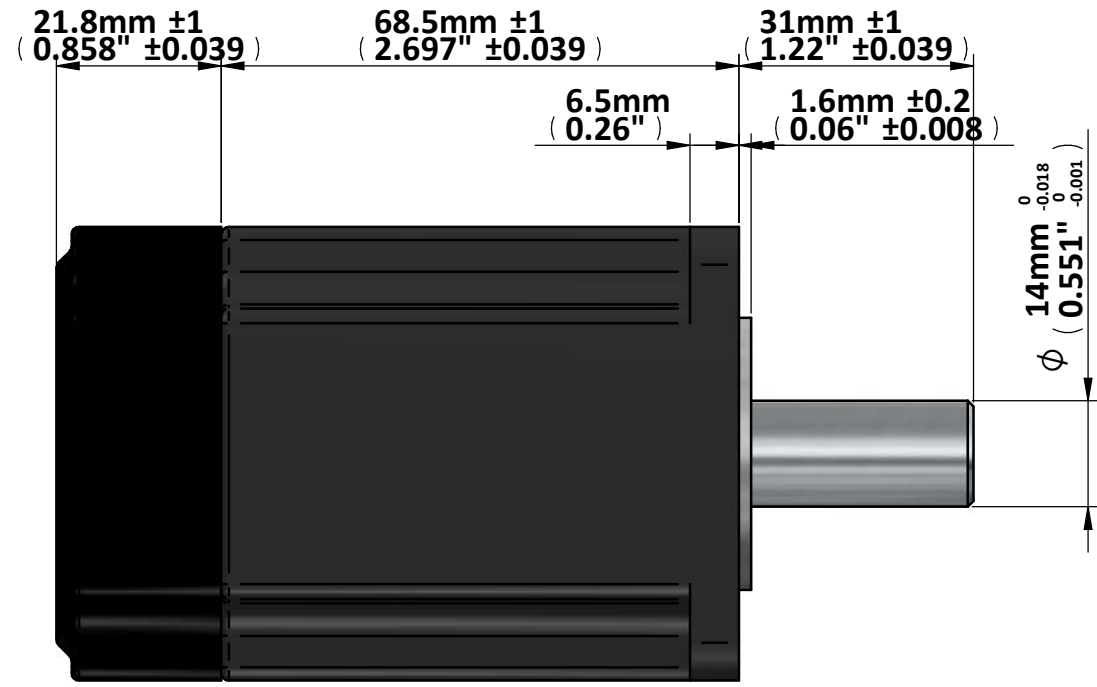
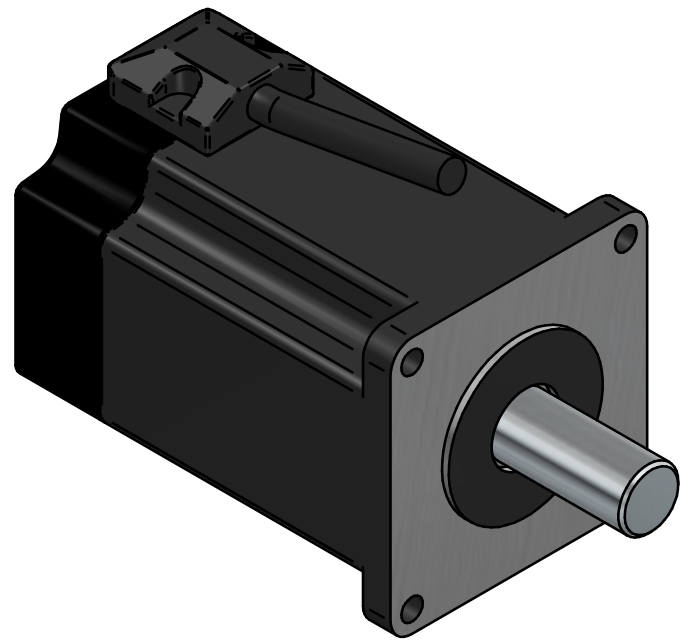
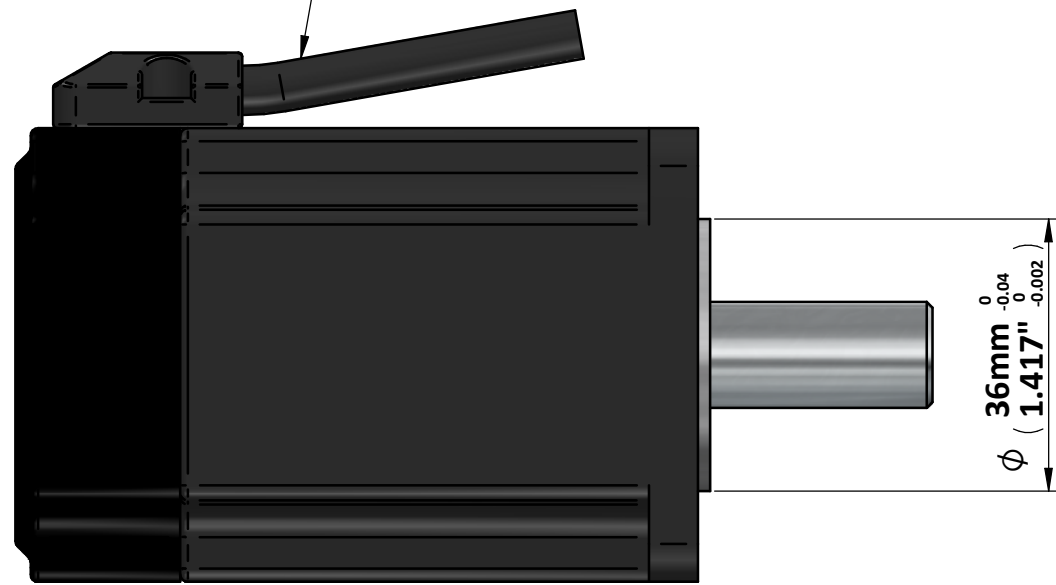
B

C

D

MOTOR 4 x 20AWG x 500MM  
ENCODER 6 x 26AWG x 500MM

ENCODER HAS 1000 PPR (4000 CPR) RESOLUTION



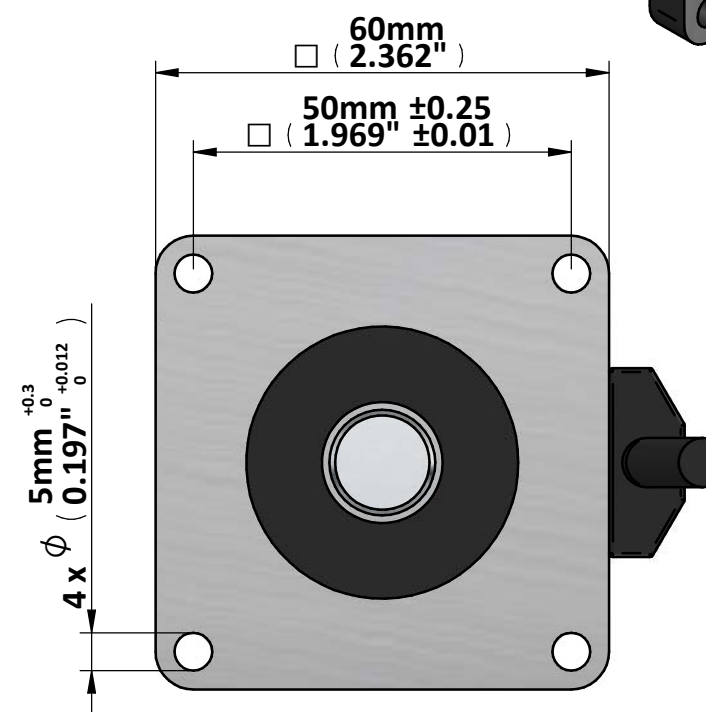
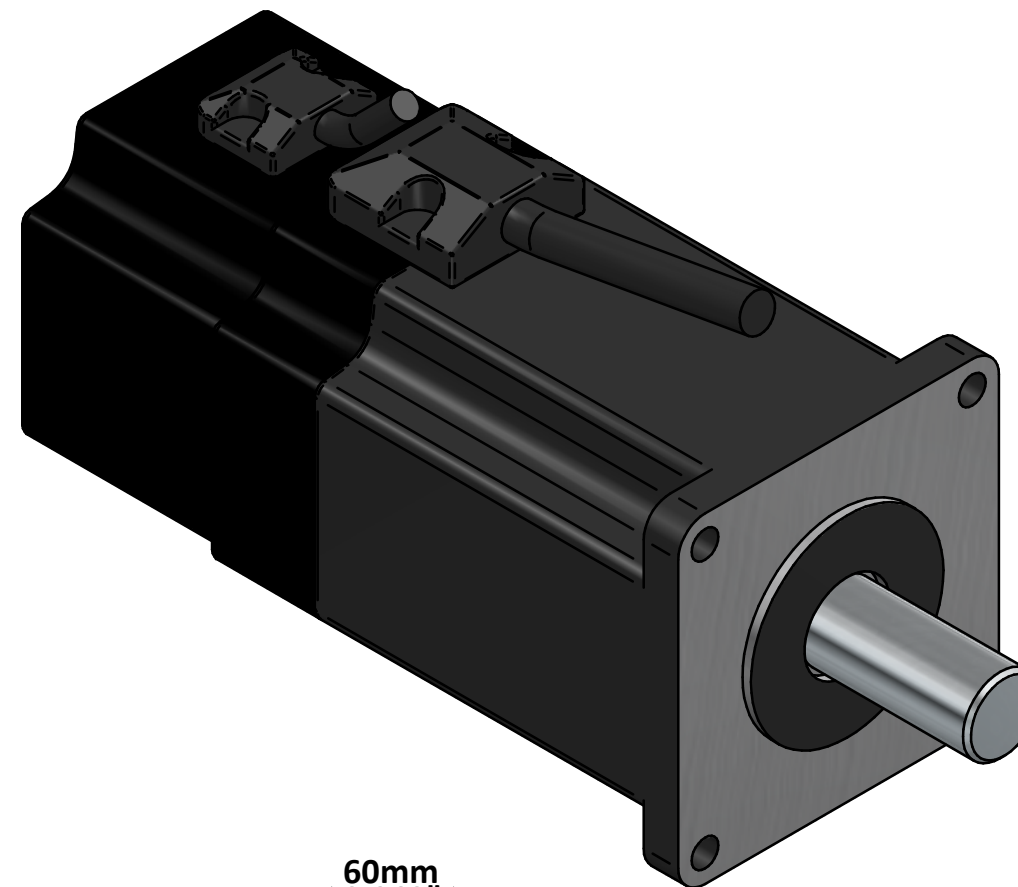
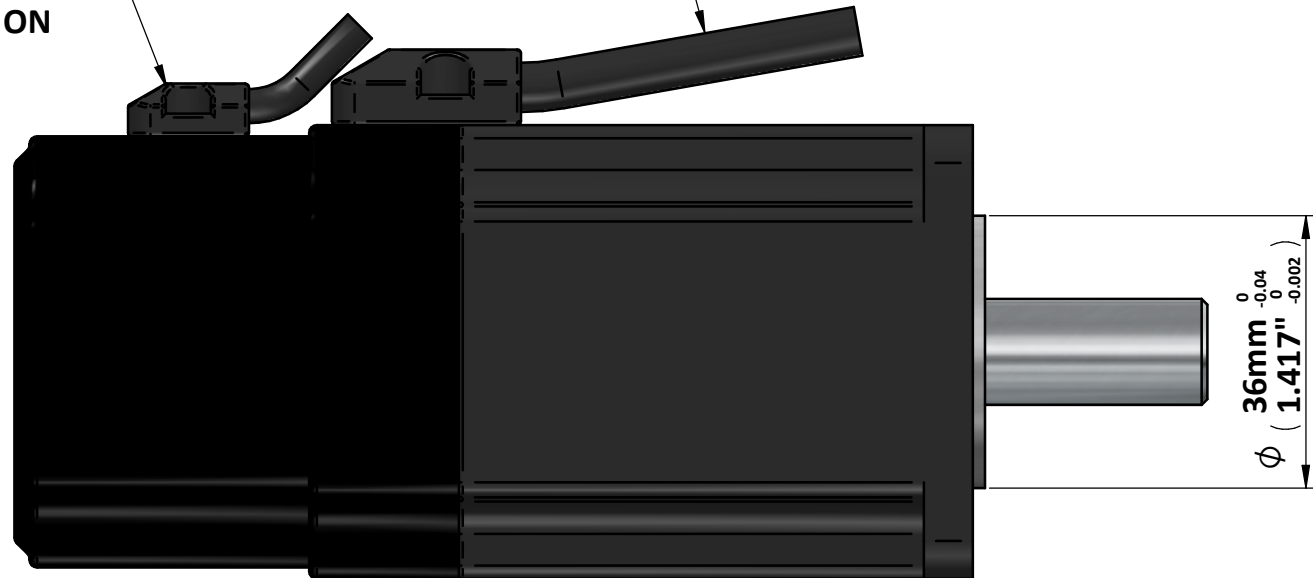
GEEPLUS Holdings Ltd

ISS NO.	NAME.	DATE
?		06.12.21

4 MATERIAL & SPECIFICATION	FINISH	REMOVE ALL BURRS & SHARP EDGES UNLESS OTHERWISE STATED	TOLERANCES UNLESS OTHERWISE STATED	CONFIDENTIAL	DRAWN	J.C.	GEEPLUS Holdings Ltd UNIT C, Triple Two Centre Tannery Close, Beckenham KENT, BR3 4BY, UK TEL : +44 (0)208 656 7788 FAX : +44 (0)208 656 4274 E-mail : info@geeplus.biz	TITLE
		All dimensions apply after plating unless otherwise stated	DIMS TO 2 PLACES : ± 0.1mm DIMS TO 1 PLACE : ± 0.2mm DIMS W/O DEC PLACE : ± 0.4mm HOLE DIA : +0.15mm / -0.05mm ANGULAR : ± 0.3°	This drawing is the property of GEEPLUS Holdings Ltd. Information and knowhow contained hereon may not be used, reproduced, or revealed to others except in accordance with contract terms or express written consent of GEEPLUS Holdings Ltd or a subsidiary thereof. Any reproduction made for company use must bear this legend	CHECKED			MOTOR WITH ENCODER
Ra & Rz values are in µm Other dims are in mm unless otherwise stated	THIS DRWG. COMPLIES WITH BS308 & BS3939	SCALE ON A3 PAGE 1:1	SCREW HEADS : ISOMETRIC TO BS 3643 PARTS 1, 2 OR 3	RoHS Compliance All materials must be RoHS compliant. Steel used for machined parts may contain max <0.35% lead.	APPROVED			DRWG. NO. DSMHE6069
A			B		C			D

MOTOR 4 x 20AWG x 500MM  
ENCODER 6 x 26AWG x 500MM

BRAKE 24V  
NORMALLY ON



GEEPLUS Holdings Ltd

ISS NO.	NAME.	DATE
?		29.07.22

4	MATERIAL & SPECIFICATION	FINISH	REMOVE ALL BURRS & SHARP EDGES UNLESS OTHERWISE STATED	TOLERANCES UNLESS OTHERWISE STATED	CONFIDENTIAL	DRAWN	J.C.	 GEEPLUS Holdings Ltd UNIT C, Triple Two Centre Tannery Close, Beckenham KENT, BR3 4BY, UK TEL : +44 (0)208 656 7788 FAX : +44 (0)208 656 4274 E-mail : info@geeplus.biz	TITLE	MOTOR WITH BRAKE & ENCODER
	Ra & Rz values are in $\mu\text{m}$ Other dims are in mm unless otherwise stated	THIS DRWG. COMPLIES WITH BS308 & BS3939	 SCALE ON A3 PAGE <b>1:1</b>	All dimensions apply after plating unless otherwise stated	DIMS TO 2 PLACES : $\pm 0.1\text{mm}$ DIMS TO 1 PLACE : $\pm 0.2\text{mm}$ DIMS W/O DEC PLACE : $\pm 0.4\text{mm}$ HOLE DIA : $+0.15\text{mm} / -0.05\text{mm}$ ANGULAR : $\pm 0.3^\circ$	This drawing is the property of GEEPLUS Holdings Ltd. Information and knowhow contained hereon may not be used, reproduced, or revealed to others except in accordance with contract terms or express written consent of GEEPLUS Holdings Ltd or a subsidiary thereof. Any reproduction made for company use must bear this legend	CHECKED			DRWG. NO.
				SCREW HEADS : ISOMETRIC TO BS 3643 PARTS 1, 2 OR 3	<b>RoHS Compliance</b> All materials must be RoHS compliant. Steel used for machined parts may contain max <0.35% lead.	APPROVED				
						USED ON				