

STYLE/DESCRIPTION	DYNAMIC TORQUE FORWARD DIRECTION						DYNAMIC TORQUE REVERSE DIRECTION					
	NOMINAL		TOLERANCE	NOMINAL		TOLERANCE	NOMINAL		TOLERANCE	NOMINAL		TOLERANCE
	Nm	LB-IN	+/-%	Nm	LB-IN	+/-%	Nm	LB-IN	+/-%	Nm	LB-IN	+/-%
vTilt-100-3.0-D-**	3.0	26.6	25%	1.88	16.6	35%	3.0	26.6	25%	1.88	16.6	35%
vTilt-100-4.0-D-**	4.0	35.4	20%	2.50	22.1	30%	4.0	35.4	20%	2.50	22.1	30%
vTilt-100-5.0-D-**	5.0	44.3	20%	3.13	26.8	30%	5.0	44.3	20%	3.13	26.8	30%
vTilt-100-6.0-D-**	6.0	53.1	20%	3.75	33.2	30%	6.0	53.1	20%	3.75	33.2	30%
vTilt-100-8.0-D-BK	8.0	70.1	20%	5.00	44.3	30%	8.0	70.1	20%	5.00	44.3	30%
vTilt-100-5.0-OW-BK	5.0	44.3	20%	0.9	7.9	MAX	5.0	44.3	20%	0.9	7.9	MAX
vTilt-100-6.0-OW-BK	6.0	53.1	20%	0.9	7.9	MAX	6.0	53.1	20%	0.9	7.9	MAX
vTilt-100-7.0-OW-BK	7.0	60.1	20%	0.9	7.9	MAX	7.0	60.1	20%	0.9	7.9	MAX
vTilt-100-8.0-OW-BK	8.0	70.1	20%	0.9	7.9	MAX	8.0	70.1	20%	0.9	7.9	MAX

** USE "BK" FOR BLACK OR "WH" FOR WHITE OPTION

2. STATIC TORQUE IS NORMALLY WITHIN 10% OF DYNAMIC TORQUE
3. LIFE: 20,000 CYCLES MIN. ONE CYCLE CONSISTS OF 90° OPEN AND 90° CLOSED, 5 CYCLES PER MINUTE MAX.
4. COUNTERBORE HOLE PATTERN DESIGNED TO MEET VESA MIS-D, 75/100, C.
5. MATERIAL:
SLEEVE AND BUSHING: ZINC DIE CAST
SHAFT AND TORQUE ELEMENT: HARDENED STEEL
PLATE AND SWIVEL BODY: ENGINEERED PLASTIC
MINERAL OIL BASED LUBRICANT
6. MAXIMUM MONITOR WEIGHT 11.3 Kg (25 LBS).
7. USER MUST DETERMINE FITNESS FOR USE IN APPLICATION.

NAME: vTILT - 100 - X.X - XX - XX

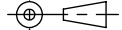
TORQUE Nm
 - 3.0
 - 4.0
 - 5.0
 - 6.0
 - 7.0
 - 8.0

TYPE
 -D - DIFFERENTIAL
 -OW - ONE WAY

COLOR
 -BK - BLACK
 -WH - WHITE

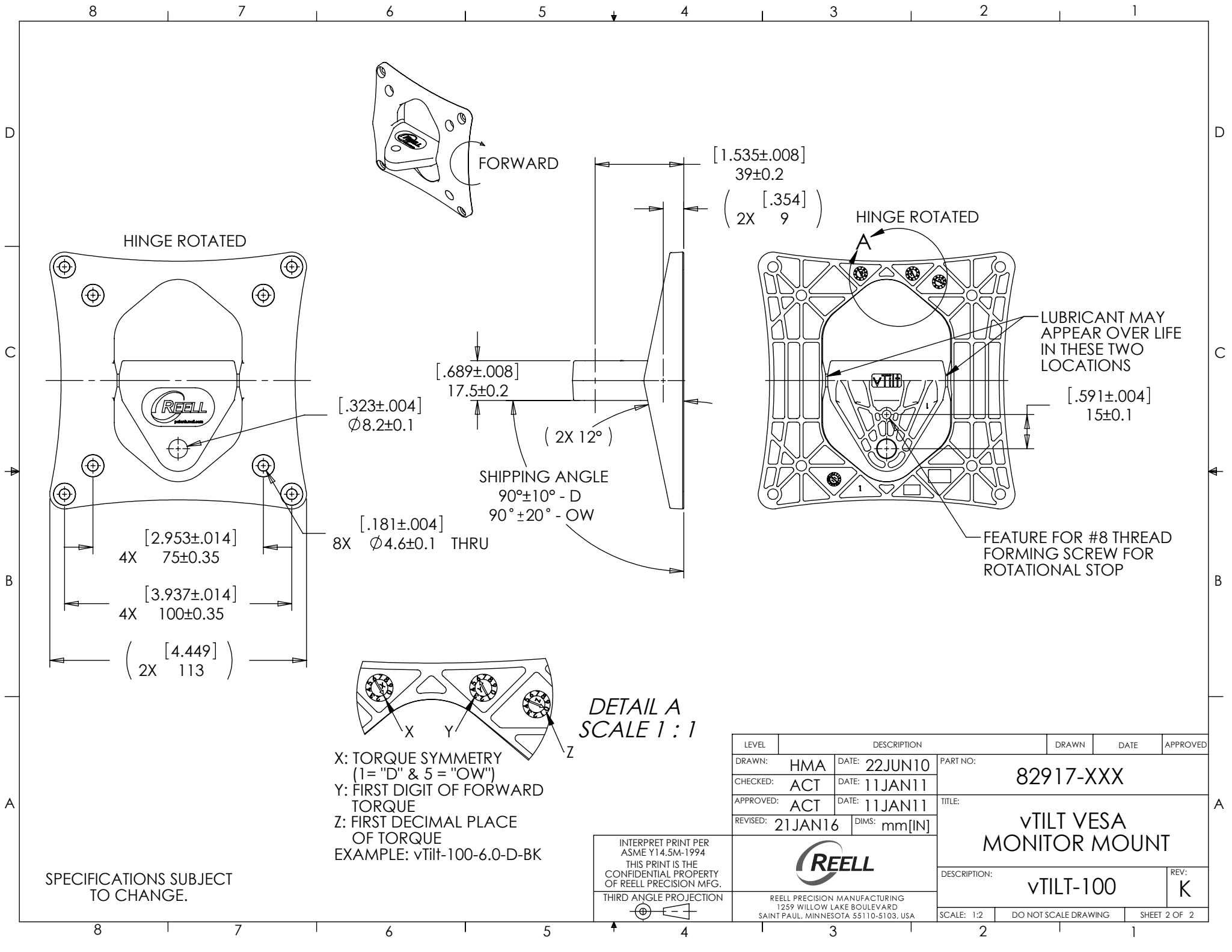
SPECIFICATIONS SUBJECT TO CHANGE.

INTERPRET PRINT PER ASME Y14.5M-1994
 THIS PRINT IS THE CONFIDENTIAL PROPERTY OF REELL PRECISION MFG.
 THIRD ANGLE PROJECTION



LEVEL	DESCRIPTION		DRAWN	DATE	APPROVED
DRAWN:	HMA	DATE: 22JUN10	PART NO: 82917-XXX		
CHECKED:	ACT	DATE: 11JAN11	TITLE: vTILT VESA MONITOR MOUNT		
APPROVED:	ACT	DATE: 11JAN11	DESCRIPTION: vTILT-100		
REVISED:	21JAN16	DIMS: mm[IN]	REV: K		
REELL PRECISION MANUFACTURING 1259 WILLOW LAKE BOULEVARD SAINT PAUL, MINNESOTA 55110-5103, USA		SCALE: 1:2	DO NOT SCALE DRAWING	SHEET 1 OF 2	





SPECIFICATIONS SUBJECT TO CHANGE.

INTERPRET PRINT PER ASME Y14.5M-1994
 THIS PRINT IS THE CONFIDENTIAL PROPERTY OF REELL PRECISION MFG.
 THIRD ANGLE PROJECTION

LEVEL	DESCRIPTION		DRAWN	DATE	APPROVED
DRAWN:	HMA	DATE: 22JUN10	PART NO: 82917-XXX		
CHECKED:	ACT	DATE: 11JAN11	TITLE: vTILT VESA MONITOR MOUNT		
APPROVED:	ACT	DATE: 11JAN11	DESCRIPTION: vTILT-100		
REVISED:	21JAN16	DIMS: mm[IN]	REV: K		
REELL PRECISION MANUFACTURING 1259 WILLOW LAKE BOULEVARD SAINT PAUL, MINNESOTA 55110-5103, USA		SCALE: 1:2	DO NOT SCALE DRAWING	SHEET 2 OF 2	