

CATALOG CODE PHL-X.X-XX

TORQUE Nm
0.9
1.4
1.8
2.3
2.8
3.4


FINISH
01 - PLAIN
02 - BLACK

DYNAMIC TORQUE	
NOMINAL (Nm)	TOLERANCE
0.9	±20%
1.4	±20%
1.8	±20%
2.3	±20%
2.8	±20%
3.4	±20%

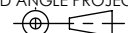
PRODUCT TORQUE SPECIFICATION AT +20°C.

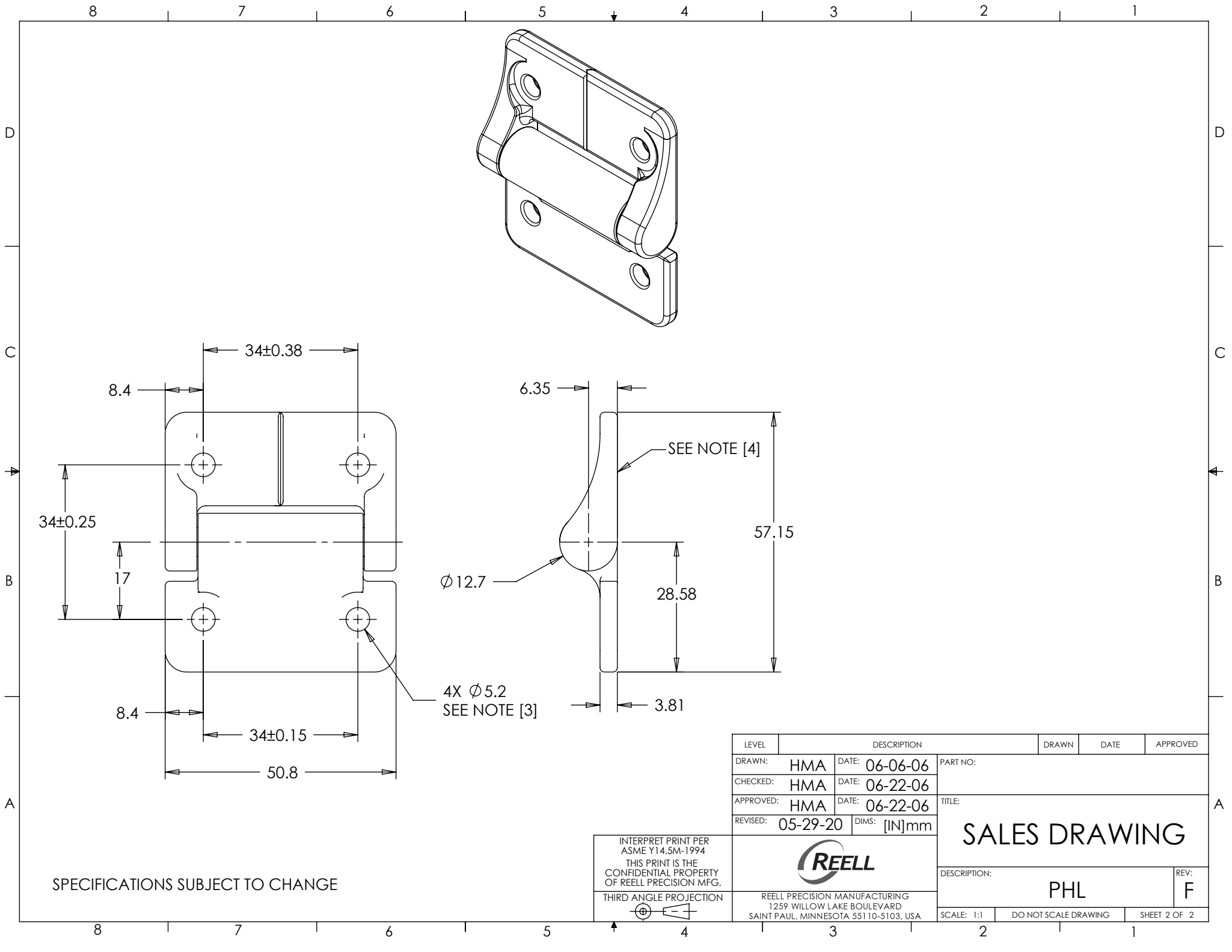
NOTES:

1. USER MUST DETERMINE FITNESS FOR USE IN APPLICATION.
2. LIFE: 50,000 CYCLES WHEN DUTY CYCLE IS LESS THAN 10% AND ROTATIONAL SPEED IS LESS THAN 100 RPM. 30 SECONDS MAXIMUM CONTINUOUS ACTUATION.
- [3] DESIGNED TO ACCEPT #10 SCREWS OR WQUIVALENT.
4. BRACKET TO SHAFT END $\pm 5^\circ$ WITH RESPECT TO EACH OTHER.
5. MATERIAL:
ZINC BRACKET
ZINC SHAFT ENDS
HARDENED STEEL SHAFT
HARDENED STEEL TORQUE ELEMENT

LEVEL	ECO - DESCRIPTION		DRAWN	DATE	APPROVED
DRAWN:	HMA	DATE: 06-06-06	REFERENCE:		
CHECKED:	HMA	DATE: 06-06-06	TITLE:		
APPROVED:	HMA	DATE: 06-06-06	SALES DRAWING		
REVISED:	05-29-20	DIMS: mm	PART NO: PHL		
 REELL PRECISION MANUFACTURING 1259 WILLOW LAKE BOULEVARD SAINT PAUL, MINNESOTA 55110-5103, USA			REV: F		
			SCALE: 1:1	DO NOT SCALE DRAWING	SHEET 1 OF 2

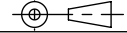
INTERPRET PRINT PER
ASME Y14.5M-1994
THIS PRINT IS THE
CONFIDENTIAL PROPERTY
OF REELL PRECISION MFG.
THIRD ANGLE PROJECTION





SPECIFICATIONS SUBJECT TO CHANGE

INTERPRET PRINT PER
ASME Y14.5M-1994
THIS PRINT IS THE
CONFIDENTIAL PROPERTY
OF REELL PRECISION MFG.
THIRD ANGLE PROJECTION



LEVEL	DESCRIPTION	DRAWN	DATE	APPROVED
DRAWN:	HMA	DATE:	06-06-06	PART NO: TITLE: SALES DRAWING
CHECKED:	HMA	DATE:	06-22-06	
APPROVED:	HMA	DATE:	06-22-06	
REVISED:	05-29-20	DIMS:	[IN]mm	
REELL PRECISION MANUFACTURING 1259 WILLOW LAKE BOULEVARD SAINT PAUL, MINNESOTA 55110-5103, USA		DESCRIPTION: PHL		REV: F
SCALE: 1:1		DO NOT SCALE DRAWING		SHEET 2 OF 2