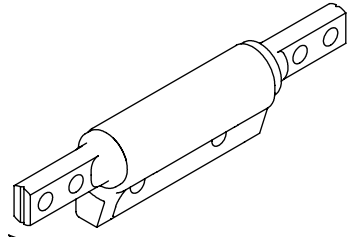


8 7 6 5 4 3 2 1

NOTES: 1.

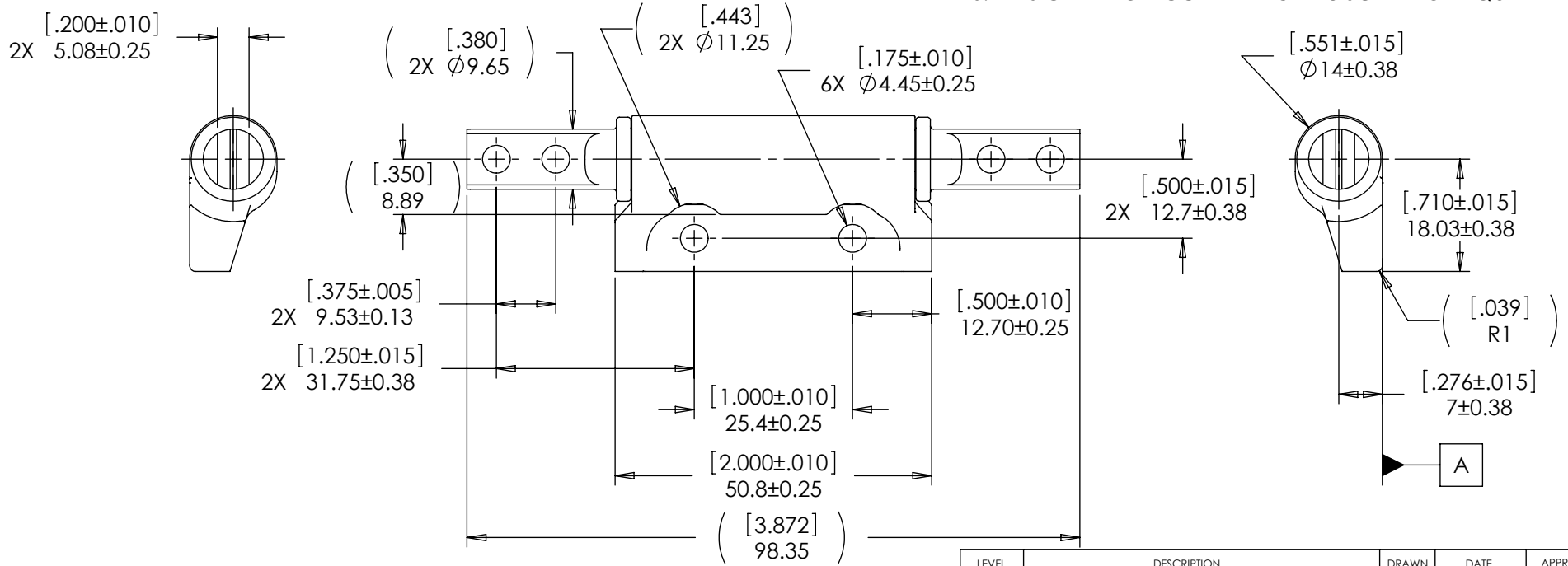
HIGH TORQUE	CCW	CW
	PART NO.	PART NO.
[13.3] Lb-in 1.5 Nm	11-503	11-504
[22.1] Lb-in 2.5 Nm	11-505	11-506
[31] Lb-in 3.5 Nm	11-507	11-508
[39.8] Lb-in 4.5 Nm	11-509	11-510
[44.3] Lb-in 5 Nm	11-501	11-502
[48.7] Lb-in 5.5 Nm	11-511	11-512

- TORQUE LOW IS 65% OF HIGH TORQUE
- TORQUE RANGE PER DIRECTION CONFIGURATION:  
 STATIC HIGH TORQUE TOLERANCE ±20%  
 STATIC LOW TORQUE TOLERANCE ±30%
- DYNAMIC TORQUE IS NORMALLY WITHIN 10% OF STATIC TORQUE.
- LIFE: 20,000 CYCLES WHEN DUTY CYCLES IS LESS THAN 10% AND ROTATIONAL SPEED IS LESS THAN 100 RPM. 30 SECONDS MAXIMUM CONTINUOUS ACTUATION.
- SHAFT END TO BE ORIENTED 90° ±5° AS SHOWN WITH RESPECT TO DATUM A.
- USER MUST DETERMINE FITNESS FOR USE IN APPLICATION.
- DESIGNED TO ACCEPT M4 OR #8 SCREW OR EQUIVALENT.



SHAFT END CW

D  
C  
B  
A



SPECIFICATION SUBJECT TO CHANGE

THIS PRINT IS THE CONFIDENTIAL PROPERTY OF REELL PRECISION MFG.  
 THIRD ANGLE PROJECTION

LEVEL	DESCRIPTION	DRAWN	DATE	APPROVED
DRAWN: DDF	DATE: 4-14-05	REFERENCE: APPL: 11-5XX		
CHECKED: TWJ	DATE: 4-26-05	DESIGNER: TIM JENUM		
APPROVED: TWJ	DATE: 4-26-05	TYPE: SALES DRAWING		
REVISED: 11-03-10	DIMS: [IN]mm	TITLE: POSITIONING HINGE STRAIGHT DUAL		
		PART NO: PHK SERIES	REV: G	
		SCALE: 1:1	DO NOT SCALE DRAWING	SHEET 1 OF 1

D  
C  
B  
A

8 7 6 5 4 3 2 1