

CATALOG CODE	DYNAMIC TORQUE	
	NOMINAL	TOLERANCE
	Nm	±%
PHA-0.28	0.28	35
PHA-0.37	0.37	30
PHA-0.46	0.46	25
PHA-0.55	0.55	25
PHA-0.65	0.65	25

NOTES:

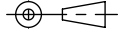
1. USER MUST DETERMINE FITNESS FOR USE IN APPLICATION.
2. LIFE: 50,000 CYCLES AT 10% DUTY CYCLE FOR SPEEDS LESS THAN 100 RPM.
3. DESIGNED TO ACCEPT M2.5 OR #3 SCREW OR EQUIVALENT.
- [4] HINGE DESIGNED TO SUPPORT A MINIMAL AXIAL FORCE IN DIRECTION SHOWN, NOT DESIGNED TO SUPPORT AXIAL FORCE IN THE OPPOSITE DIRECTION.
5. MATERIAL:
 ZINC BRACKET
 ZINC SHAFT END
 HARDENED STEEL SHAFT
 HARDENED STEEL TORQUE ELEMENT

CATALOG CODE PHA-X.XX

TORQUE Nm
- 0.28
- 0.37
- 0.46
- 0.55
- 0.65

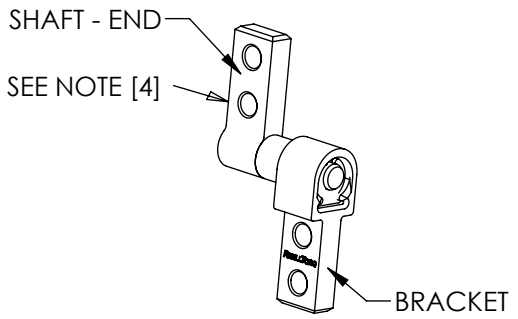
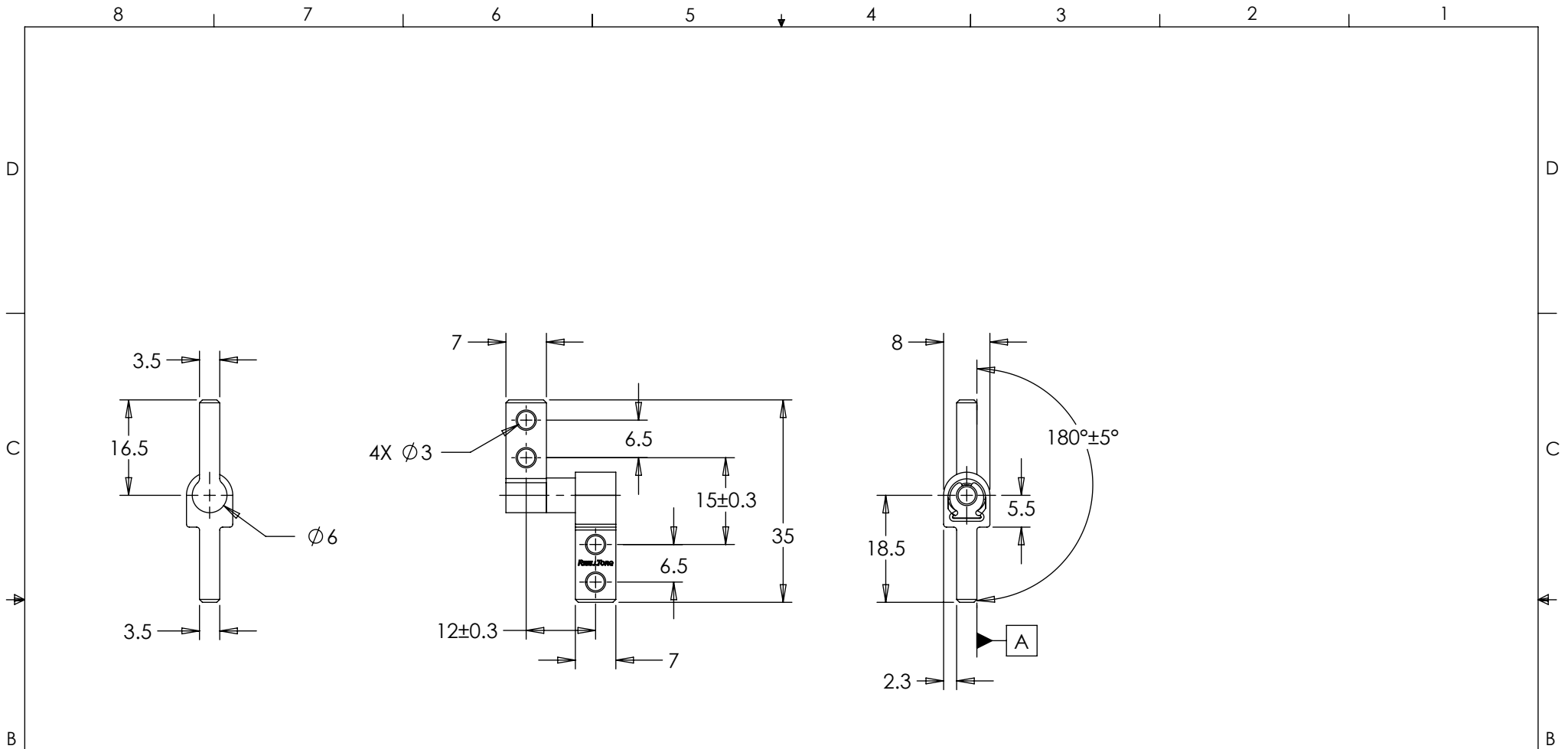
LEVEL	DESCRIPTION	DRAWN	DATE	APPROVED
DRAWN: HMA	DATE: 16FEB11	PART NO:		
CHECKED: RGW	DATE: 18FEB11	TITLE:		
APPROVED: RGW	DATE: 18FEB11	SALES DRAWING		
REVISED: 05MAY20	DIMS: mm			
DESCRIPTION: PHA		REV: D		
SCALE: 1:1		DO NOT SCALE DRAWING		SHEET 1 OF 2

INTERPRET PRINT PER ASME Y14.5M-1994
 THIS PRINT IS THE CONFIDENTIAL PROPERTY OF REELL PRECISION MFG.
 THIRD ANGLE PROJECTION




REELL PRECISION MANUFACTURING
 1259 WILLOW LAKE BOULEVARD
 SAINT PAUL, MINNESOTA 55110-5103, USA

SPECIFICATION SUBJECT TO CHANGE



ALL DIMENSIONS REFERENCE
SEE CAD MODEL FOR UNSPECIFIED FEATURES.

LEVEL	DESCRIPTION		DRAWN	DATE	APPROVED
DRAWN:	HMA	DATE: 16FEB11	PART NO:		
CHECKED:	RGW	DATE: 18FEB11	TITLE:		
APPROVED:	RGW	DATE: 18FEB11	SALES DRAWING		
REVISED:	05MAY20	DIMS: mm			
			DESCRIPTION:		REV:
			PHA		D
REELL PRECISION MANUFACTURING 1259 WILLOW LAKE BOULEVARD SAINT PAUL, MINNESOTA 55110-5103, USA			SCALE: 1:1	DO NOT SCALE DRAWING	SHEET 2 OF 2

INTERPRET PRINT PER
ASME Y14.5M-1994
THIS PRINT IS THE
CONFIDENTIAL PROPERTY
OF REELL PRECISION MFG.

THIRD ANGLE PROJECTION

SPECIFICATION SUBJECT TO CHANGE