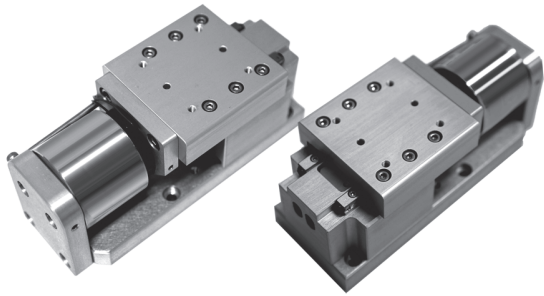




**CVCA Series**  
**Voice Coil Actuator** *Ultra High Frequency Powered by CVC Voice Coil*

SPECIFICATIONS



**CVCA**

- Direct drive, Cogging free
- Fast response, low moving mass
- Non contact between core and coil movement
- Excellent reliability

**Performance**

	Unit	CVCA40-HF-6.5-CRX	CVCA40-20-CRX	CVCA50-30-CRX	CVCA60-25-CRX	CVCA60-HF-20-CRX
Stroke	mm	6.5	20	30	25	20
Peak Force	N	55.45	28.75	44.95	72.20	131.10
Continuous Stall Force @ 100°C*	N	16.09	8.34	13.14	20.90	37.72
Continuous Stall Force @ 125°C*	N	18.48	9.58	14.98	24.07	43.70
Peak Power @ 125°C	W	104.14	86.66	137.38	166.93	273.72
Continuous Power @ 100°C*	W	8.13	6.77	10.90	12.98	21.03
Continuous Power @ 125°C*	W	11.57	9.63	15.26	18.55	30.41

**Electrical**

	Unit	CVCA40-HF-6.5-CRX	CVCA40-20-CRX	CVCA50-30-CRX	CVCA60-25-CRX	CVCA60-HF-20-CRX
Peak Current	A	2.15	1.88	2.54	3.51	2.85
Continuous Stall Current @ 100°C*	A	0.624	0.545	0.742	1.016	0.820
Continuous Stall Current @ 125°C*	A	0.717	0.626	0.846	1.170	0.950
Force Constant @ Mid Stroke	N / A	25.78	15.31	17.71	20.57	46.00
Back EMF Constant @ Mid Stroke	V / m/s	25.78	15.31	17.71	20.57	46.00
Coil Resistance @ 25°C	ohm	16.03	17.50	15.19	9.65	24.00
Coil Resistance @ 100°C*	ohm	20.89	22.80	19.79	12.57	31.27
Coil Resistance @ 125°C*	ohm	22.51	24.57	21.33	13.55	33.70
Inductance @ 1kHz (Inside fully)	mH	5.52	5.59	4.14	3.26	15.40
Motor Constant @ 125°C*	N / √W	5.43	3.09	3.83	5.59	7.92
Max. Terminal Voltage	Vdc	48	48	48	48	400

**Thermal**

	Unit	CVCA40-HF-6.5-CRX	CVCA40-20-CRX	CVCA50-30-CRX	CVCA60-25-CRX	CVCA60-HF-20-CRX
Thermal Resistance @ 100°C*	°C / W	9.22	11.07	6.88	5.78	3.57
Thermal Resistance @ 125°C*	°C / W	8.64	10.39	6.55	5.39	3.29
Max. Coil Temperature	°C	150	150	150	150	150

**Mechanical**

	Unit	CVCA40-HF-6.5-CRX	CVCA40-20-CRX	CVCA50-30-CRX	CVCA60-25-CRX	CVCA60-HF-20-CRX
Moving Mass	g	250	215	347	474	679
Total Mass	g	902	916	1404	2035	2817

**Notes:**

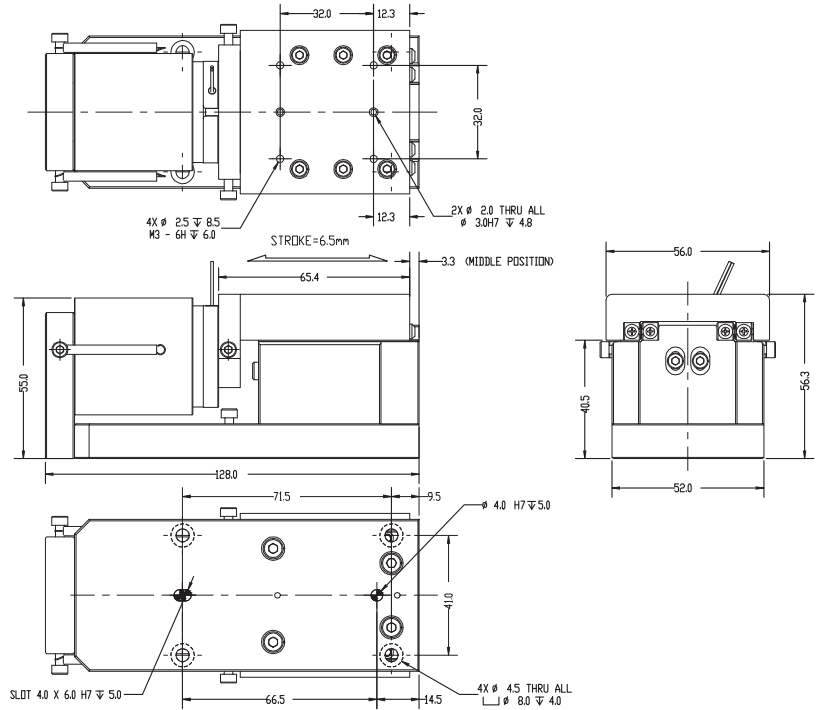
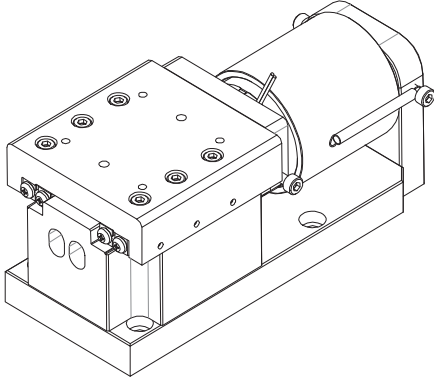
1. \* Ambient temperature 25°C, natural convection, no heat sink.
2. Specifications tolerance – inductance +/-30%, all others +/-10%.



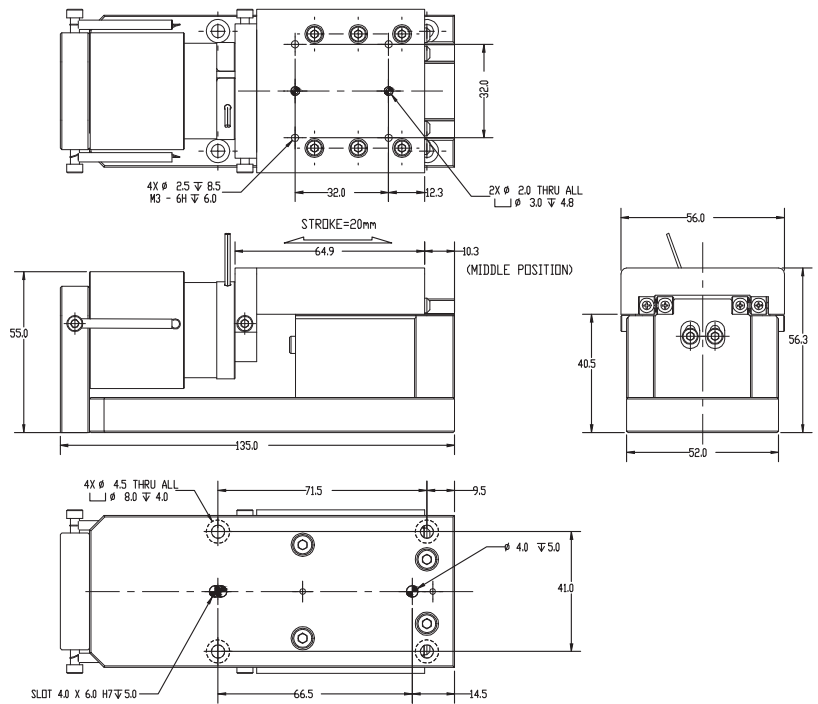
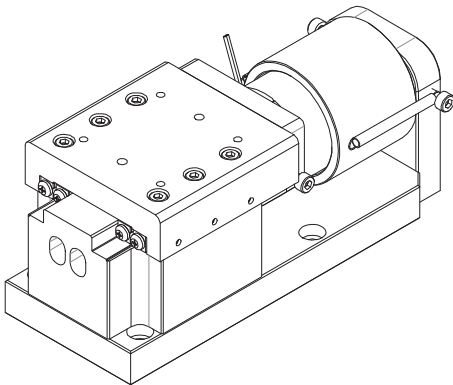
**CVCA Series**  
**Voice Coil Actuator** *Ultra High Frequency Powered by CVC Voice Coil*

**SPECIFICATIONS**

**CVCA40-HF-6.5-CRX**



**CVCA40-20-CRX**

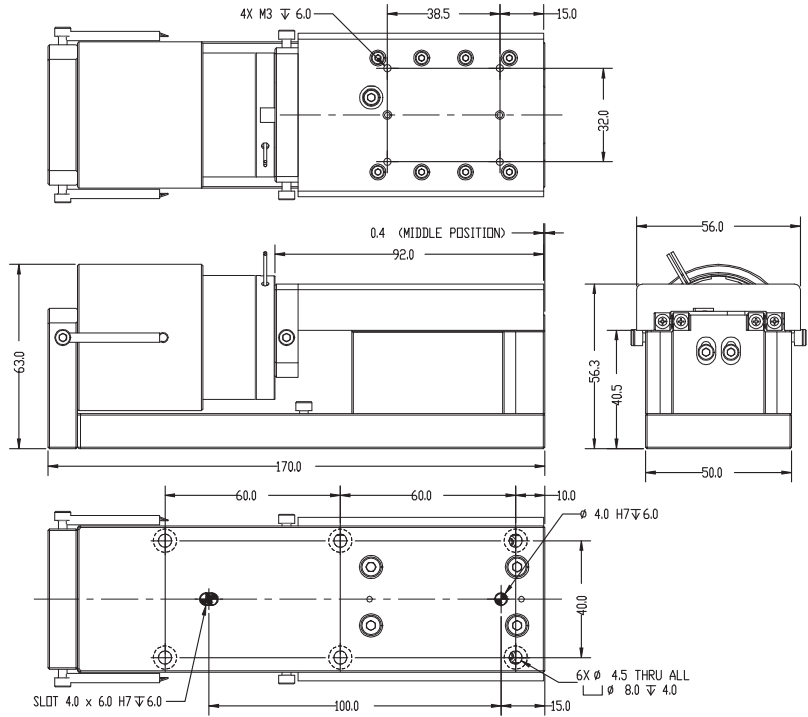
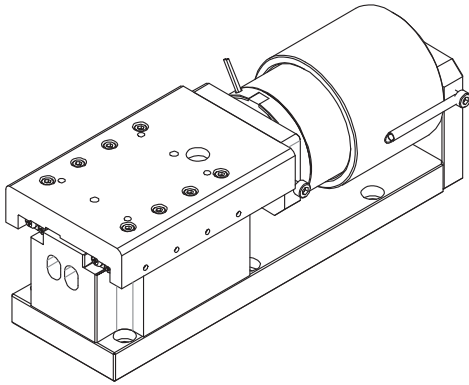




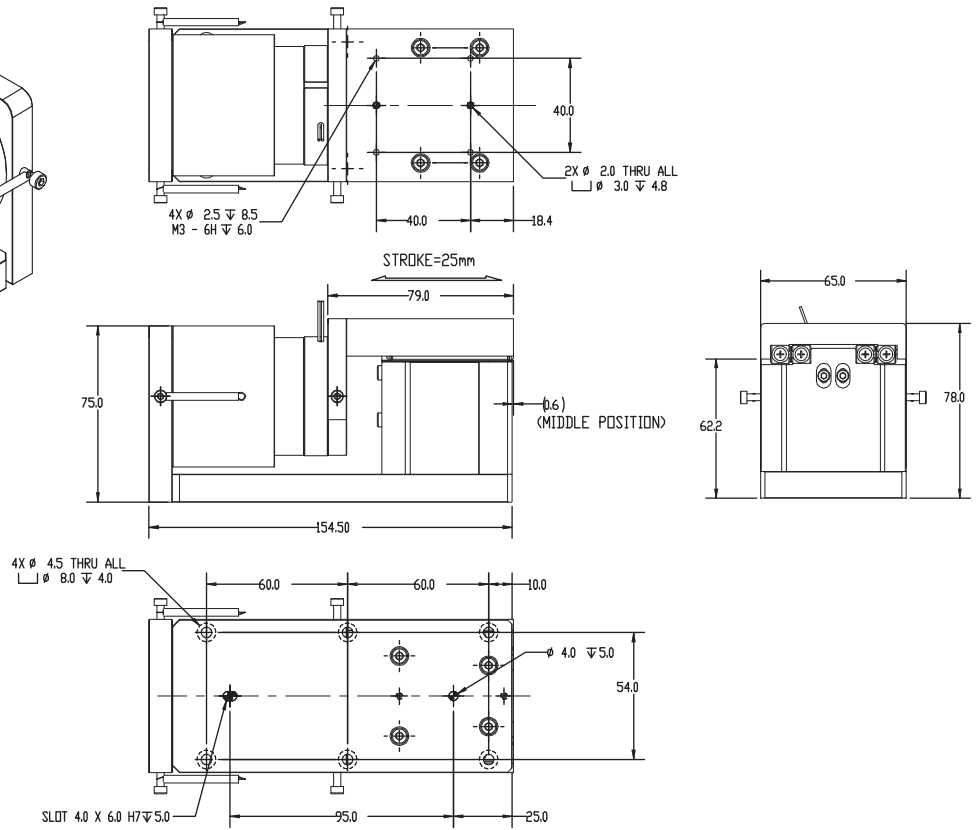
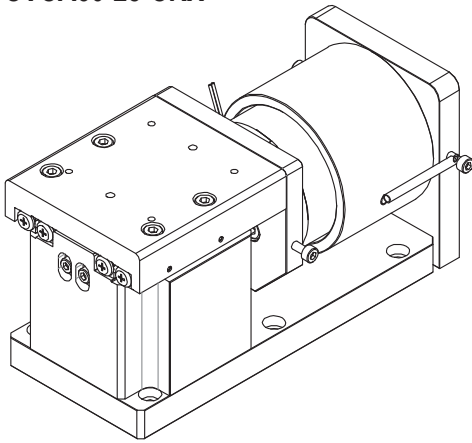
**CVCA Series**  
**Voice Coil Actuator** *Ultra High Frequency Powered by CVC Voice Coil*

**SPECIFICATIONS**

**CVCA50-30-CRX**



**CVCA60-25-CRX**



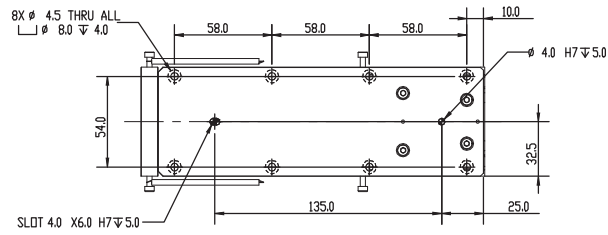
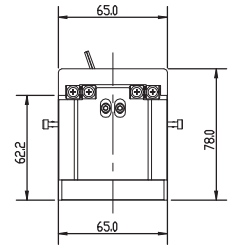
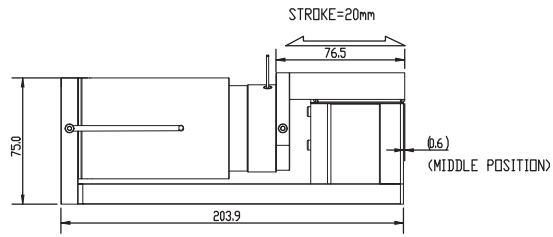
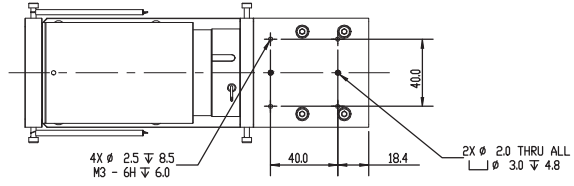
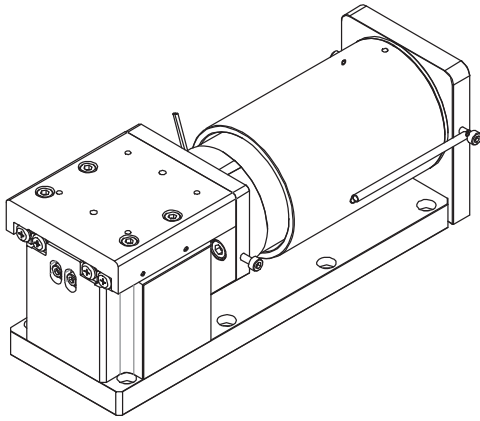
We reserve the right to make technical changes at any time without prior notice



**CVCA Series**  
**Voice Coil Actuator** *Ultra High Frequency Powered by CVC Voice Coil*

**SPECIFICATIONS**

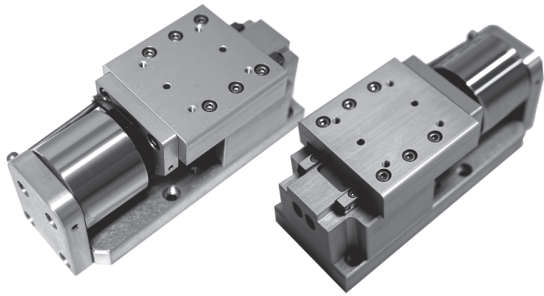
**CVCA60-HF-20-CRX**





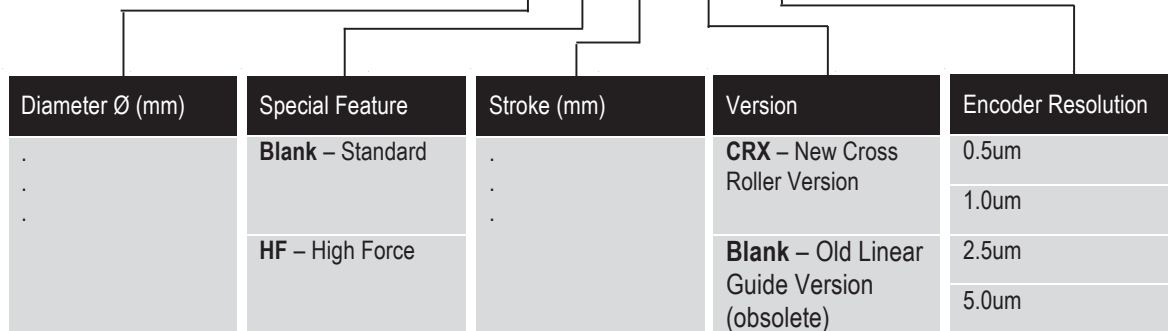
**CVCA Series**  
**Voice Coil Actuator** *Ultra High Frequency Powered by CVC Voice Coil*

PART NUMBERING



## CVCA Series Part Numbering System

CVCA 40 – HF – 6.5 – CRX – 0.5



CVCA Series
CVCA40 – HF – 6.5 – CRX
CVCA40 – 20 – CRX
CVCA50 – 30 – CRX
CVCA60 – 25 – CRX
CVCA60 – HF – 20 – CRX