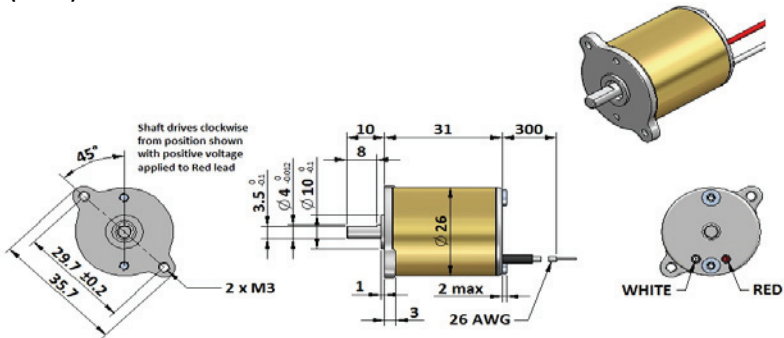




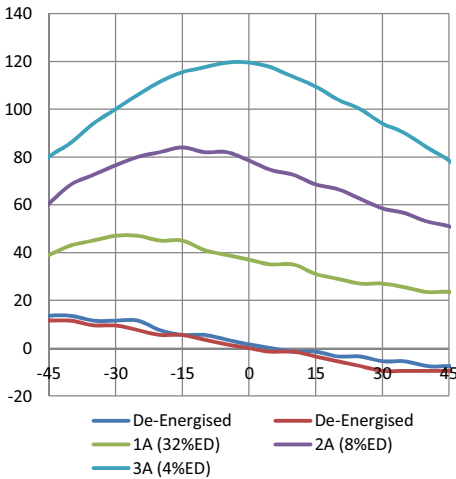
GEEPLUS

BRS2631

Device drawn with shaft aligned to mid position  
 Nominal  $15.6\Omega$ ,  $3.8\text{mH}$  for operation at  $12\text{V}$ ,  $40\%\text{ED}$   
 Rotor Inertia  $2.1\text{ gcm}^2$   
 Life Expectancy  $>10\text{M}$  cycles, no load,  $60^\circ$  rotation  
 Mass  $70$  grammes  
 Insulation Resistance  $>100\text{M}\Omega$ ,  $500\text{VDC}$  Megger  
 Dielectric Strength  $1000\text{vAC}$ ,  $50/60\text{Hz}$ ,  $1$  minute  
 Class E ( $120^\circ\text{C}$ ) insulation class



Torque (mNm) vs Angle



Response (ms) vs Load Inertia ( $\text{gcm}^2$ )

